

برقی مہندسون (مشاریف)



Future Creativity

البرق المستقبل



بريمي إيموجي معتمدة لأكثر من عقد في مجال الاستشارات الهندسية بمنطقة الشرق الأوسط  
نطمح بمشاركته ونسخر فيها خبرتنا لتحقيق راحة المجتمع



Prime is an Architect and Engineering Consultant Company established in 2005 in Abu Dhabi UAE providing comprehensive and integrated consulting architectural and engineering services Prime has years of experience working in successful projects for the various clients and formulated

a quality approach to undertake the challenges within the real estate development field. Prime decided to improve the quality of services it provided to clients. It adopted ISO 9001, ISO 1400 and OHSAS 1800 as the basis for implementing its system and planning for improvements

We obtained these certificates in August of 2010 The company is present in Abu Dhabi (based office), Dubai, Egypt and KSA and looking forward to expand into the Gulf the team of professional staff works conjointly in an effort to provide the highest level of professional services to clients

Prime is seeking for excellence that makes the design in complete harmony with clients' requirements and real estate development market demands. While Client satisfaction is 'Paramount', Prime strives to present a combination of ,Quality, Price and Delivery. Towards achieving its mission and vision in order to fulfill clients' ambitions



In line with our QHSE Policy, we reiterate that no project is too big or too small to effect serious contributions to building a better environment and society at large

We are committed to provide quality services that fully conform to customer's contractual and regulatory requirements





PRIME provides professional services in

- ✓ Architectural and Engineering Design
- ✓ Construction Management
- ✓ Interior Design
- ✓ Master Planning
- ✓ Landscaping
- ✓ Project Management
- ✓ Structural and Value Engineering consultancy Services
- ✓ Mechanical, Electrical & Plumbing (MEP) Engineering
- ✓ (Heating, Ventilation & Air-Conditioning (HVAC
- ✓ Piping & Fire fighting
- ✓ Electrical
- ✓ High Voltage
- ✓ Low Voltage
- ✓ Generation
- ✓ Networks and Transmission
- ✓ Communications & Security
- ✓ Surveying Services
- ✓ Roads Bridges and tunnels Design
- ✓ and we share in Competition

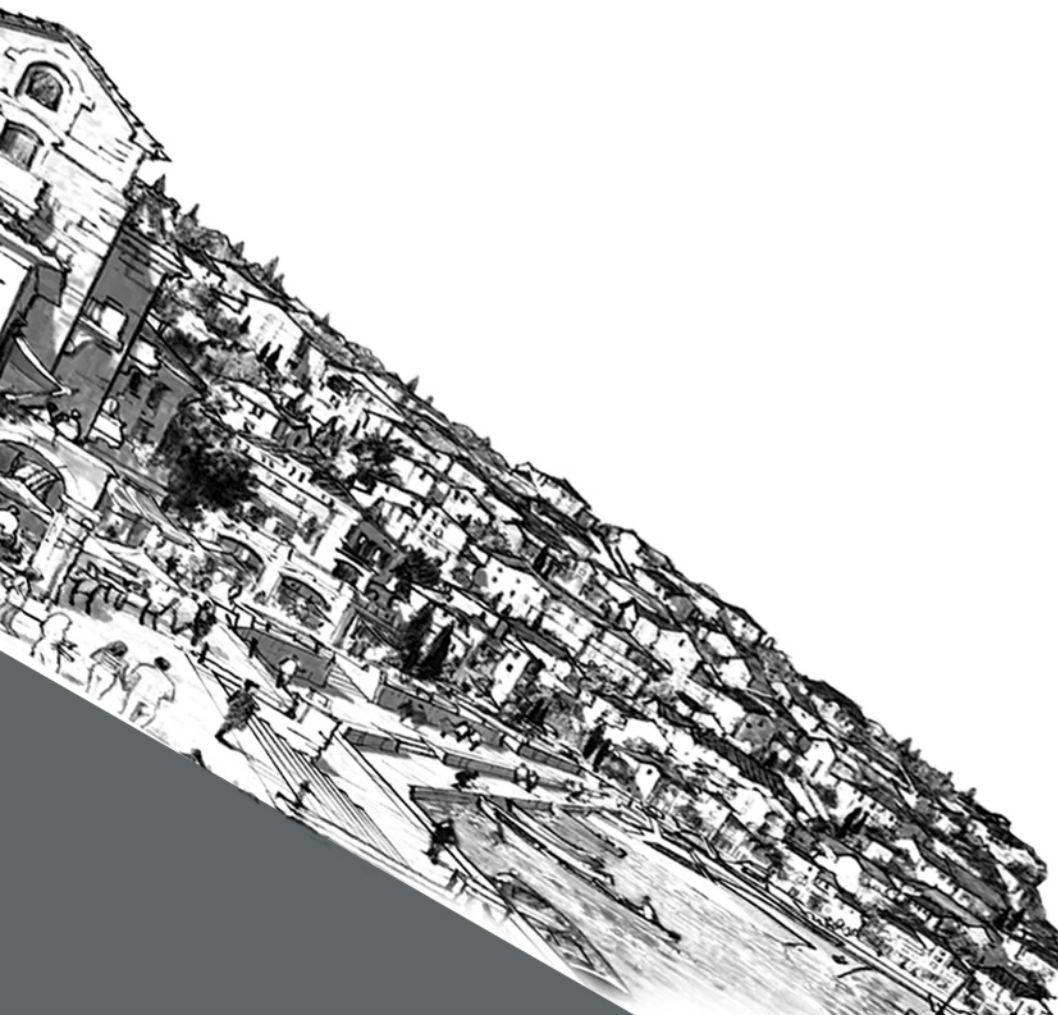
[www.primeec.com](http://www.primeec.com)



Note : We are pleased to inform you of new projects through our website

Urban Design & Planning  
Housing Complexes & Highrise Towers  
Hotel Resorts  
Sports  
Educational  
Hospitals  
Services Complex & Mall  
Government  
Office Buildings  
Industrial & Stores  
Religious  
Residences Villas & Palaces  
Interior  
- Special Projects -  
- Value Engineering -  
- Creative Solutions -

MAIN PROJECTS



## Urban Design & Planning

Urban Design & Planning  
Housing Complexes & Highrise Towers  
Hotel Resorts  
Sports  
Educational  
Hospitals  
Services Complex & Mall  
Government  
Office Buildings  
Industrial & Stores  
Religious  
Residences Villas & Palaces  
Interior  
- Special Projects -  
- Value Engineering -  
- Creative Solutions -



### Sunnyhill Willoughby Bay

December 2014  
Antigua, Caribbean Islands



PROJECT NAME

SUNNYHILL WILLOUGHBY BAY  
HOTEL COMPLEX RESORT

LOCATION

SOUTHEAST, ANTIGUA ISLAND SOUTH AMERICA

HOTEL COMPLEX RESORT

**Sunnyhill Willoughby Bay**  
December 2014  
Antigua, Caribbean Islands



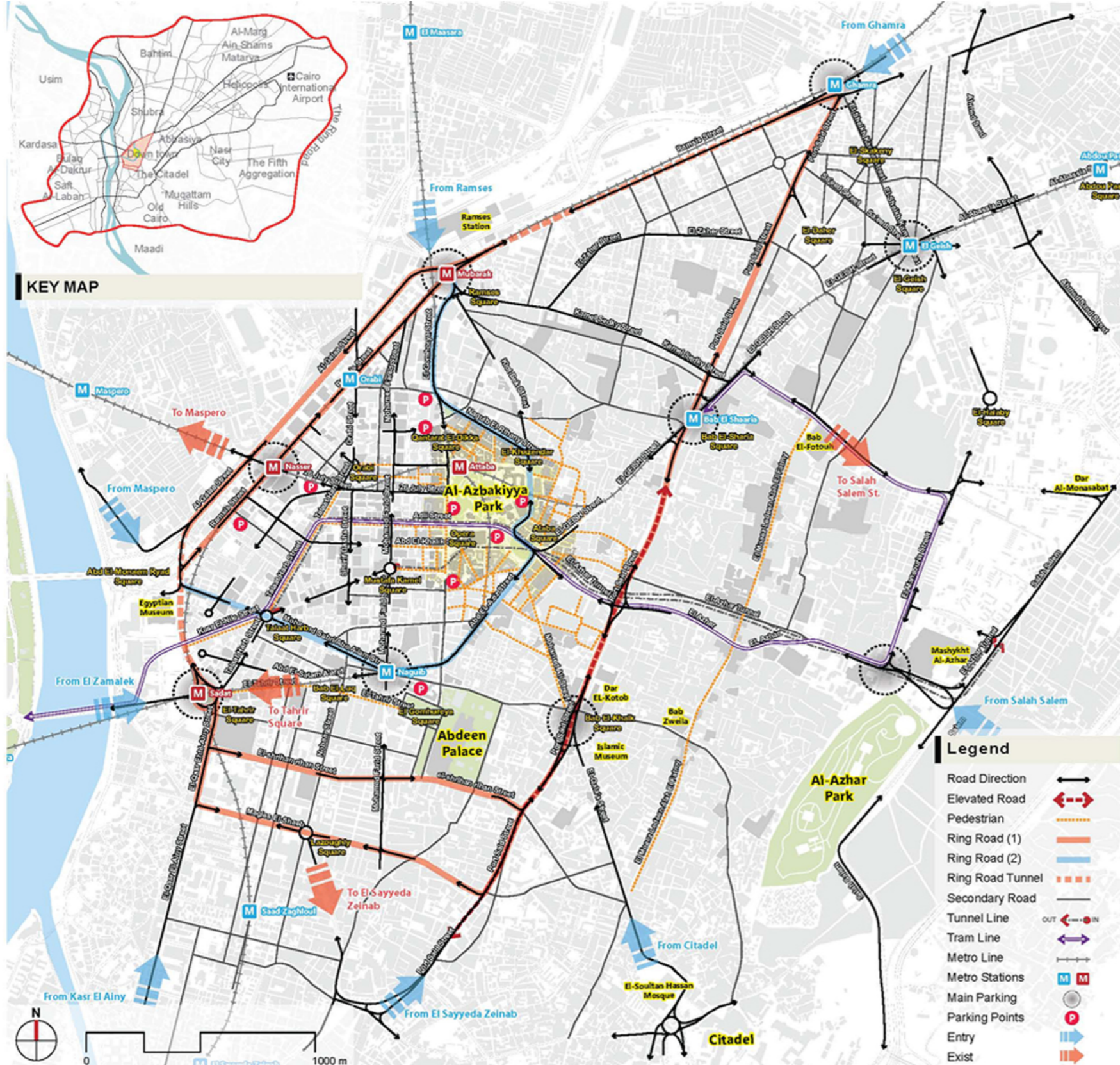
**Project Overview**

Total Area: 100 acre    Phases: 4    Owner: Joint venture between the government and investors



**Land use program**

- |                                 |                                |                                  |                             |
|---------------------------------|--------------------------------|----------------------------------|-----------------------------|
| Lake Hotel : 300Rooms *5        | Palace: 16 plots               | Cargo Village : 3.3 acr          | Staff Community: 124 units  |
| Sea Hotel : 72 Suites           | Garden apartments: 240 plots   | Hotel Resort facilities: 3.8 acr | Central utilities : 2.7 acr |
| private suites (2BR): 145 plots | Serviced apartments: 214 plots | Marina : 8 acr                   | Public services : 6.2 acr   |
| palm lake villas: 87 plots      | Central Mall : 4.5 acr         | Gardens&Lake areas: 50 acr       |                             |



## Parking Areas

Generally area is suffering from lack of parking areas, so our scope is to provide car parking areas all around the proposed down town ring road, these underground parking areas near to metro stations and under main squares.

In the competition area the following parking lots will be provided:

- Underground parking area in front of Intercontinental Hotel, to serve residents of the hotel and users of underground metro.
- Underground parking area between the two direction of Azhar Tunnel to serve users of the celebration zone and new cultural complex building.
- Underground parking area under the theatres zones (national theatre), to serve visitors of this zone.
- Underground parking area under Kekhia Mosque plaza, to serve users of the space.



## Ataba Square

- Ataba square will be a major entrance to the site from old Cairo, the down town ring road will pass in it as follow:
  - o Cars from Klot Baik Street will pass through it to Abd El Aziz or Azhar Square.
  - o Cars from Azhar and El-Gesh Street come to the Square and then to Klot Baik or Abd El-Aziz Street.
  - o Mohamed Aly street will be transformed into pedestrian spine that contains cultural and musical activities.
  - o Emergency and drop off are the only acceptable cars that will move all around the square.



## Bab El-She'ria square

- It will be major public bus transport terminal instead of Ataba bus terminal, and it will be connected to Ataba by underground metro line 3 and proposed tram. This terminal will include underground parking to serve visitors of the area that may take metro or tram to go from it to Ataba Square.
- Limited bus lines will only go from it through our competition area to connect it with other part of the city from Nasr City to the Nile.



## Azhar Bridge

- Azhar Bridge will be removed in our vision, because it presents a visual barrier that is cutting through Ataba Square skyline and encroaching on Azhar Street in the heart of Historic Fatimid City.
- The traffic problem that may happen due to this removal will be solved by making Portsaid road an elevated road to solve the crossing in Azhar street with it.



## Azhar Tunnel

- The tunnel will be extended on the direction to khedive's Cairo to solve through traffic problem in the competition area :
  - Entrance from khedive's Cairo to the tunnel will be in Moustafa Kamel Square.
  - Exit from tunnel to khedive's Cairo will be in Taf'at Harb Square.



## Downtown Ring Roads

- Big ring road:
  - From Ramses Square to Ghamra to Bab El Shaaria Square to Bab El-Khalk Square to Lazoughly Square to El-Tahrir Square
- Small ring road:
  - From Ramses Square to Ataba Square to Mohamed Naguib Square to El-Tahrir Square to Abd El-Monaem Ryad Square then Ramses Square again.



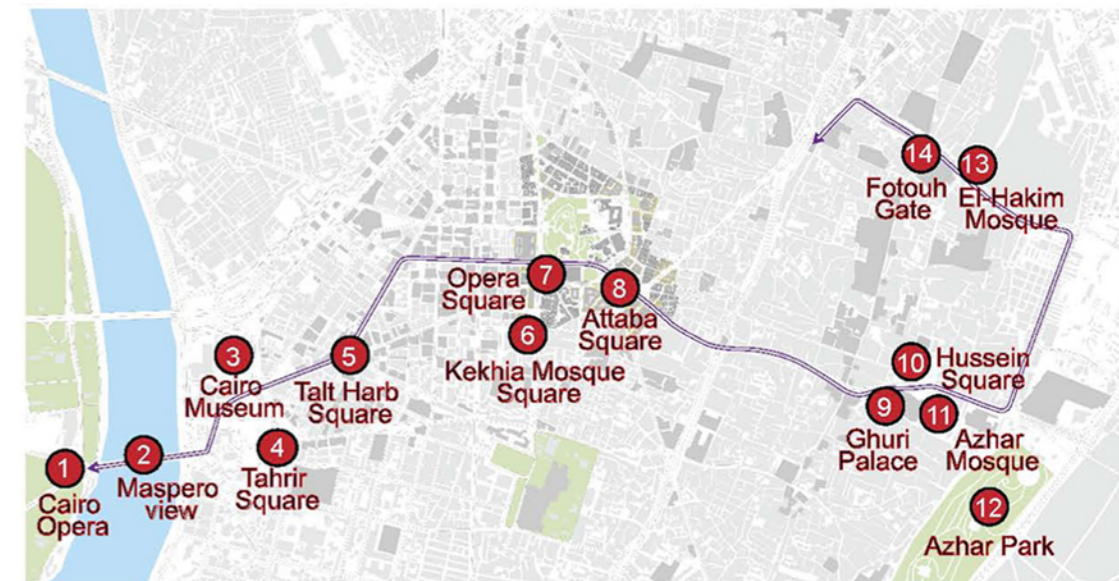
## Transportation

- To help reduce high traffic our strategy will use new public and private transportation:
  - Tram line from Nile to Ataba Square then entrance of Azhar Street and then Bab El She'ria Square.
  - Downtown taxi; which is a taxi that will be in downtown only and have different colour.
  - Small touristic shelter bus; it will be used for touristic use only

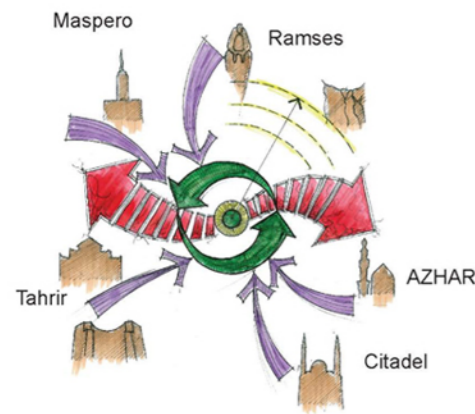


## International Competition For Urban Design and Harmony and Historic Conservation Of Opera and Ataba Squares

October 2010 Cairo, Egypt

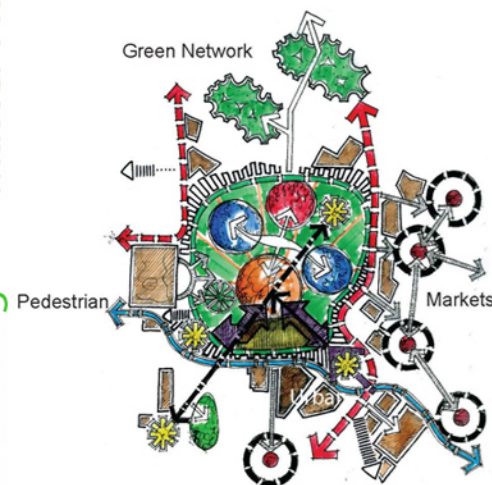


## Tram Path



## Regional Approach

A cultural, commercial & recreational radiating center, which is centralized in Cairo City connecting Fatimid Cairo & Khedive's Cairo with major poles like, the Railway Station, the Nile and the Castle.

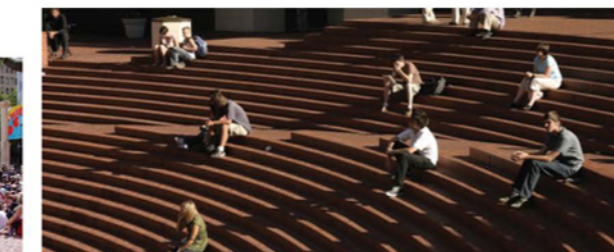
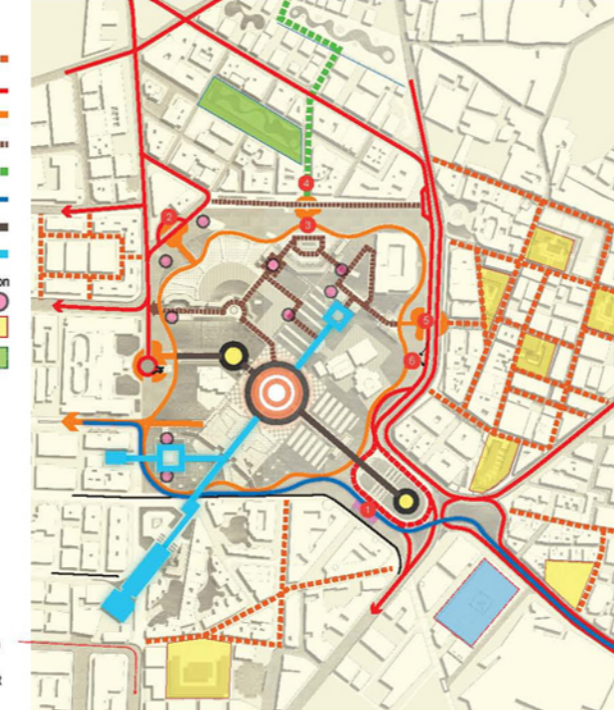


## Urban Approach

A Transitory Zone between Fatimid Cairo and Khedive's Cairo with a unique identity that is competitive both inside and outside Egypt where people gather, celebrate, do shopping, sing and socialize through 24/7 activities.



- Legend**
- Pedestrian Network
  - Road Network
  - Green Carpet Network
  - Green Network
  - Tram Line
  - Ataba Spine
  - Kekhia Spine
  - Entrance and Exit of Metro Station
  - Markets
  - Green Areas
- 1 Tram Station
  - 2 Downtown Bus Station
  - 3 Green Carpet Connection
  - 4 Green Network Entrance
  - 5 Drop off (Downtown Taxi)
  - 6 Parking Entrance and Exit



- 1 Cairo Opera Stage
- 2 National Theatre
- 3 Puppet Theatre
- 4 Talia Theatre
- 5 Azbakiyya Market
- 6 Central Tower
- 7 Oriental Restaurant
- 8 Oriental Cafe
- 9 Futuristic Gate Building
- 10 Festivals Plaza
- 11 Entrance to Green Carpet
- 12 Outdoor Cafe
- 13 Ibrahim Pasha Plaza
- 14 Reading Zone
- 15 Main Pedestrian Spine
- 16 Central Spine to Khedive's Cairo
- 17 Kekhia Pedestrian Spine
- 18 Ataba Pedestrian Spine
- 19 Tram Line
- 20 Gate
- 21 Azbakiyya Protected Trees
- 22 Entrance to Metro Station

- 23 Exit From Metro Station
- 24 Green Network
- 25 Markets Network
- 26 Mohamed Aly Spine
- 27 Loading & Unloading Area
- 28 Tiring Plaza
- 29 Markets' Booths
- 30 Sednawy Square
- 31 Green Carpet
- 32 Ataba Plaza
- 33 Mohamed Aly Spine
- 34 Pedestrian Network (Limited Ca
- 35 Parking
- 36 Downtown Bus Station
- 37 Sednawy Cultural Building
- 38 Continental Hotel
- 39 Eden Palace Hotel
- 40 Kekhia Hotel
- 41 Post Building
- 42 Fire Brigade Building
- 43 Parliament Hotel
- 44 Kekhia Mosque



## Culture Complex Architecture Concept



 **Haia Residential Community**  
April 2014  
Hodeidah City, Yemen

- Urban Design & Planning
- Housing Complexes & Highrise Towers
- Hotel Resorts
- Sports
- Educational
- Hospitals
- Services Complex & Mall
- Government
- Office Buildings
- Industrial & Stores
- Religious
- Residences Villas & Palaces
- Interior
- Special Projects -
- Value Engineering -
- Creative Solutions -



## Community Perspective

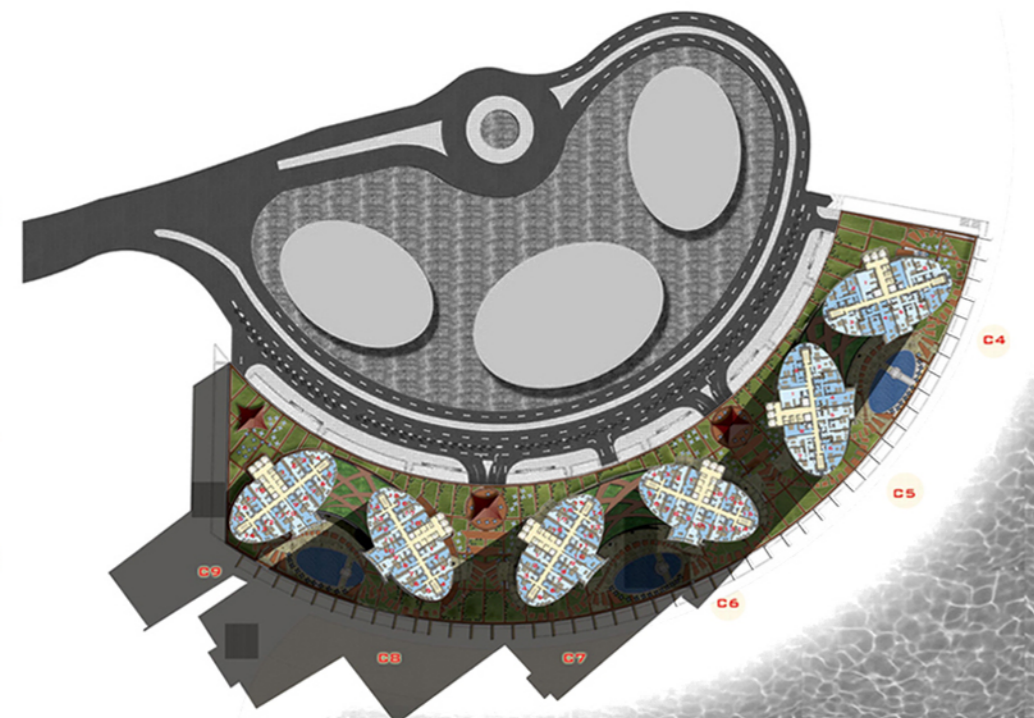
Residential Comenty contains 312 villas  
Plus a central recreational area service



## Hydra Avenue Towers

January 2010  
Al - Reem Island, Abu Dhabi, U.A.E

Hydra Avenue Towers is situated in the spectacular City of Lights project a modern development draped across 140 acres of land to create a blend of commercial and residential towers. It features a high level of amenities facilities and recreation comforts



Master Plan

The design supplies more than 12000 m<sup>2</sup> of beautiful landscape in the roof garden of the podium. The roof garden creates a unique place to .live, see and enjoy  
These beautiful and healthy environments are built in the top of the building in order to make use of the roof aside .from creating unique sites

### Project contents

six Towers with different heights (from 31 to 36 stories) with) show rooms, shops, residential units, swimming pools and recreational facilities, health centers and parking floors designed to accommodate 2500 .cars

### Structure system

Reinforced concrete

### Construction Cost

1,344,707,000.00 AED

### Client

Hydra Properties

### Main Developer

Tamouh Investments

### Location

Al Reem Island, Abu Dhabi

### Supervision

Substructure only

Construction stage at March 2009



Full Design & Supervision Consultancy Services



2,3

### Beach Residence Towers

**Construction Cost**  
370,000,000.00 AED  
**Project contents**  
Residential Towers shared  
.the 2 same podium  
The towers accommodate  
484units varied between  
studios, one bedroom  
units and 2 bedroom units  
The podium contains large  
retail spaces & services  
with parking areas in the  
basement floors designed  
to accommodate 321  
cars. The two towers  
consist of 22 typical floors



6,7

### Beach Residence Towers

**Construction Cost**  
410,000,000.00 AED  
**Project contents**  
Residential Towers shared  
.the 2 same podium  
The towers accommodate  
459units varied between  
studios, one bedroom units  
and 2 bedroom  
The podium contains large  
retail spaces & services with  
parking areas in the  
basement floors designed  
.to accommodate 438 cars



Tamouh Towers

## Green Architecture

Designing green areas is a major concept in most of our projects in the U.A.E. especially because  
.of the climate conditions in the U.A.E. as well as the increase in meter square of buildings in these areas

We begin to think in alternatives by thinking of roof garden in order to achieve the principle of  
.sustainability with respect to special circumstances of the U.A.E  
.By designing roof gardens, in most cases ,we now add green areas both on the street and roof levels

Roof gardens are incorporated in some of our designs to create an atmosphere of good and  
healthy environment for the users of the spaces. Selection of plantation was also based on  
.compatibility and those that are indigenous in the U.A.E.'s environment

## Beach Residence Towers 1,4 & 5

February 2010  
Al Reem Island, Abu Dhabi, U.A.E

**Client:** Al Odaid Real Estate Co., L.L.C, **Main Developer:** Emirates Land Group/sorouh **Construction Cost:** 520,000,000.00 AED  
3Residential Towers shared the same podium The towers accommodate 650 units varied between  
studios, one bedroom units and 2 bedroom units plus 733 cars

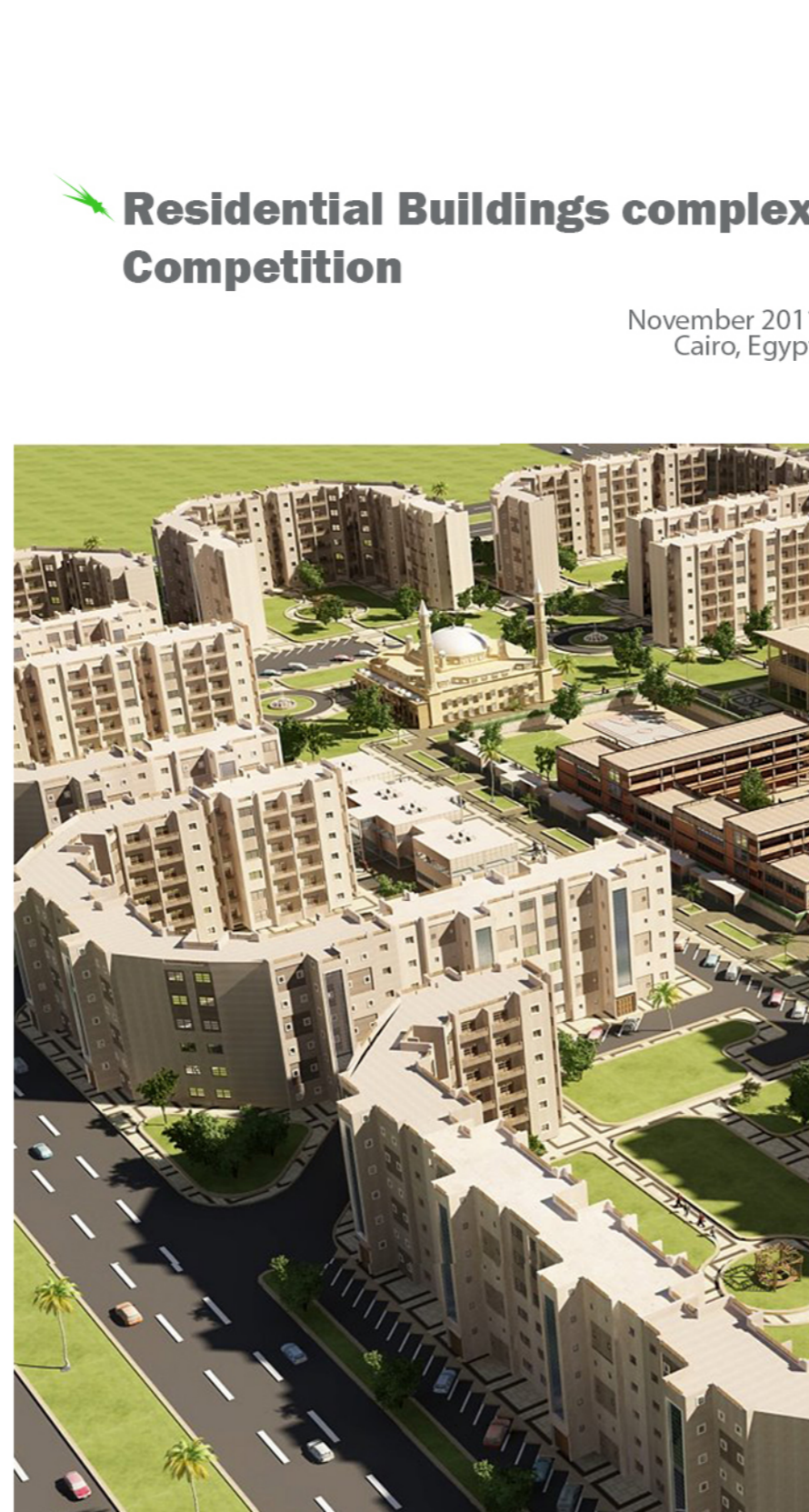
Project contents





**Zaher Tower**  
May 2009  
Down Town, Abu Dhabi, U.A.E

**Construction Cost**  
40,000,000.00 AED  
**Client**  
Adel El Hosani  
**Project contents**  
Residential units in the typical floors, offices in the mezzanine, show room in ground floor  
**Number Of Floor**  
.Ground floor, Mezzanine typical floors and 18 .basement floor 1



**Residential Buildings complex Competition**  
November 2011  
Cairo, Egypt

**Construction Cost**  
22,784,000.00 AED  
**Client**  
Adel Al Hosani  
**Location**  
Khalifa City SE-4 Plot No. 1,2,3,4  
**Project Contents**  
Compound villas with ,open green spaces recreational uses and .fitness center  
**Number Of Floors**  
units, each unit 16 consist of 2 attached villas and each villa consist of ground and first floor



Site Picture 2010



Satellite Map January 2015

**Accommodation Building of the Staff of Embassy Kazakhstan**

June 2010  
Abu Dhabi, U.A.E



**Construction Cost**  
40,000,000.00 AED  
**Client**  
Ministry Of Foreign Affairs Republic Of Kazakhstan  
**Contractor**  
ALBAWANI Company Saudi Arabia  
**Project Contents**  
Plot area : 5341.65 m2  
Ground floor area :1457.3 m2  
Building area : 3401.36 m2  
Service area : 170.46 m2

## NAVI 2 Towers

May 2008  
Al Reem Island, Abu Dhabi, U.A.E

Local Consultancy Services



### Client

Tamouh Investment

### Main Developer

Tamouh Investment

### Project contents

4residential towers with studio, 1 BR and 2 BR units with swimming pool and luxury services on the roof deck. The podium consist of 6 floors for car parking use of cars 1420

Housing  
Complexes &  
Highrise Towers

## ART Tower

February 2009  
Abu Dhabi, U.A.E

### Construction Cost

44,812,000.00 AED

### Client

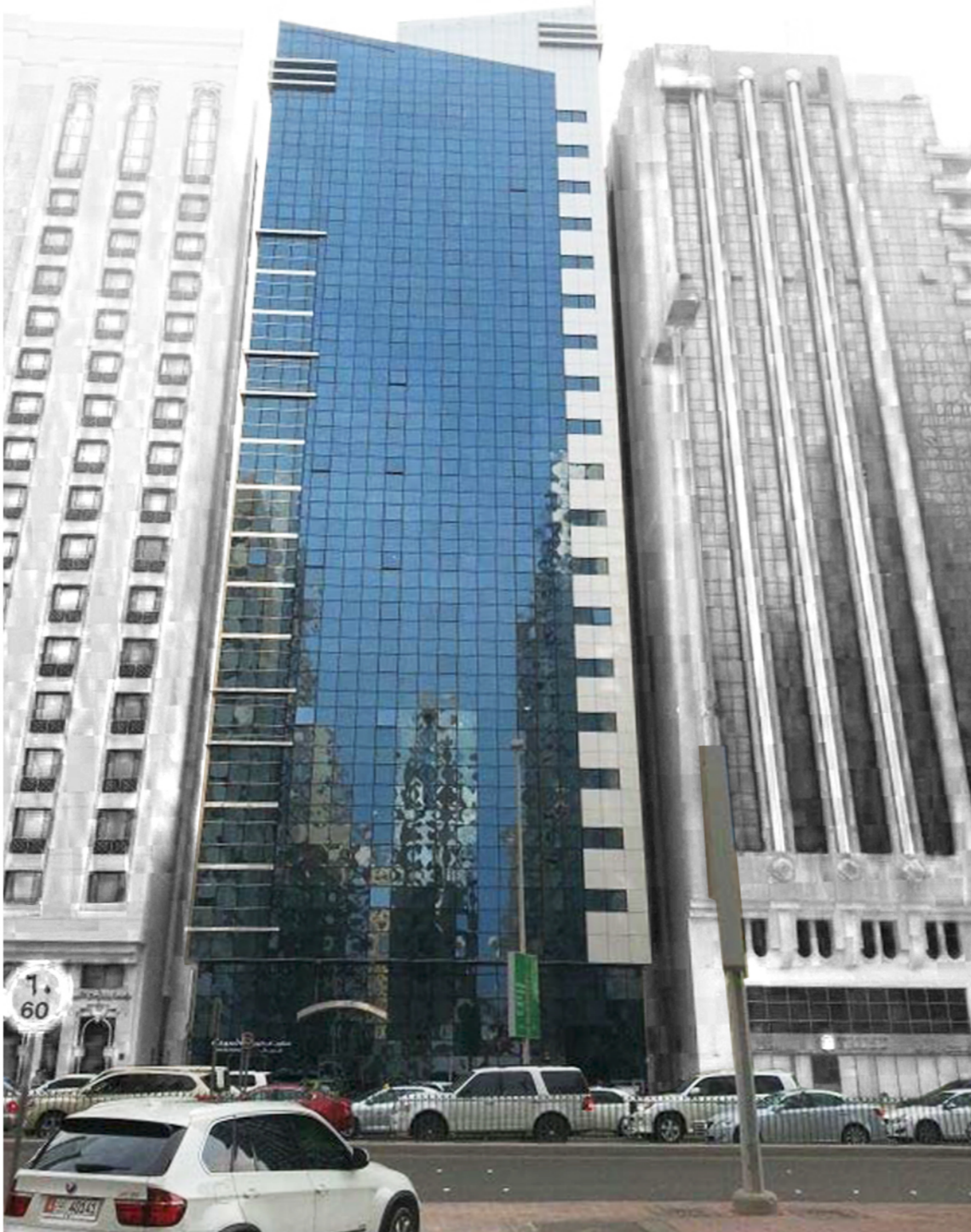
Adel El Hosani

### Project contents

Residential units in the typical floors, offices in the mezzanine, show room in ground floor and parking areas in basement .floors

### Number Of Floor

Ground floor, Mezzanine floor, 18 typical floors and 3 basement floors



## Al Harbour Heights Tower

May 2008  
Reem Island Abu Dhabi, U.A.E

### Client

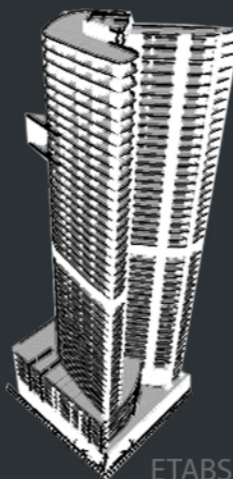
DAMAC

### Project Description

This Project is Residential - Tower consist of three basement, ground three mezzanine, thirty eight floors and roof Total no of floors is 46 floors

The structure system is dual system to resist the lateral loads of Earthquake Wind and to enhance the & horizontal irregularity of the tower

Local Consultancy Services



ETABS 3D

## NAVI 1 Towers

May 2008  
Al Reem Island, Abu Dhabi, U.A.E

### Construction Cost

1,300,000,000.00 AED

### Main Developer

Tamouh Investment

### Project contents

4residential towers with studio, 1BR and 2 BR units with swimming pool and luxury services on the roof deck. The podium consist of 6 floors for car parking accommodate 1350 cars

## Local Consultancy Services



## Four Vanes

May 2008  
Al Reem Island, Abu Dhabi

### Construction Cost

1,200,000,000.00AED

### Main Developer

Tamouh Investments

### Project contents

4residential towers with studio, 1 BR and 2 BR units with swimming pool and luxury services on the roof deck. The podium consist of 3 floors and ground floor, height of towers-is varied from 23 to 28 typical floors

## 7 أبراج تضم وحدات سكنية وتجارية

# إطلاق «أبراج شاطئ العديد» باستثمارات ملياري درهم

لفت الشيباني إلى أن هذا المشروع جرى حجزه بالكامل من قبل المستثمرين ورجال الأعمال، مشيراً إلى أنه سيتم عرض مجسمات ونماذج المشروع خلال معرض سيتي سكيب أبوظبي الذي سيقام خلال الأيام القليلة المقبلة.

والفاد الشيباني بأن الشركة ومنذ تأسيسها قامت بإطلاق 5 مشاريع عقارية هي برج الجيرون في مشروع دانة أبوظبي وبرج النخلة في مشروع أبراج الصحراء إضافة إلى 3 أبراج مكنية ضمن مشروع سراجا أبوظبي الذي سيقام في جزيرة أبوظبي بتكلفة إجمالية تبلغ 4 مليارات درهم.

وأوضح أن الشركة تعزم زيادة استثماراتها في مدينة دبي إضافة إلى مصر والسعودية واليمن وغيرها من البلدان، وقال إن شركة العديد تدرس في الوقت الراهن إقامة مشروع يضم 3000 فيلا في مشروع دبي لتكلفة استثمارية لن تقل عن 6 مليارات درهم، موضحاً أنه في حال الموافقة على المشروع سيتم البدء بتنفيذه مطلع العام المقبل في ما سيتم طرح الفلل خلال معرض سيتي سكيب دبي.

وأفاد بأن رأسمال شركة العديد العقارية يبلغ 800 مليون درهم.

ونفى الشيباني أي حديث عما يشاع عن حدوث كساد في الإقبال على الوحدات العقارية خلال السنوات القليلة المقبلة بأبوظبي موضحاً أن الطلب على الوحدات العقارية في أبوظبي لا يزال كبيراً ويتجاوز ضعف ما سيتم توفيره من وحدات سكنية خلال الفترة المقبلة.

أبوظبي - عدنان نجم:

كشفت شركة العديد العقارية عن مشروع «أبراج شاطئ العديد» الذي يضم 7 أبراج سكنية وتجارية ويقام في جزيرة الريم وذلك خلال حفل أقامته الشركة ظهر أمس في فندق قصر الإمارات. وقال محمود الشيباني الرئيس التنفيذي للشركة: «سوف يضم المشروع الجديد 2400 شقة سكنية وتجارية، فيما تبلغ تكلفة المشروع ملياري درهم وسوف يبدأ العمل بتنفيذ المشروع في الربع الثالث من العام 2008 في حين سيتم الانتهاء من المشروع في عام 2011».

## «العديد» تطلق مشروعاً

### في جزيرة الريم بملياري درهم

أن دراسة المشروع الجديد الذي ستنفذها الشركة قامت على الأسعار الحالية لمواد البناء من جانبها أوضحت محمود الشيباني الرئيس التنفيذي لشركة العديد العقارية خلال مؤتمر صحفي عقد أمس للإعلان عن المشروع، أنه بعد إنجاز المشروع يرتفع لمستوى استثمارات الشركة إلى حوالي 4 مليارات درهم.

وأشار الشيباني إلى أن الشركة تملك مجموعة من المشاريع العقارية في دولة الإمارات وأن أغلب مشاريعها تنفذ في إمارة دبي، مؤكداً أن سوق الإمارات وأبوظبي على وجه الخصوص تضم فرصاً استثمارية جيدة وهو ما يشجع على إطلاق مشاريع عقارية جديدة.

وأضاف أن شركة «صروح» هي المطور للبنية التحتية للمشروع، كما أشار إلى أن العديد وقعت اتفاقية مع شركة إن سي إيه لتسويق المشروع. وأشار إلى أن أسعار البيع للمشروع ستكون معقولة وفي متناول الجميع، موضحاً بأن المبنى السكنية ذات مميزات ومواصفات معينة وسيحتوي المشروع أيضاً على مرسى للتلويح.

وأكد الغيث أن ارتفاع أسعار العقارات في أبوظبي تأخر عن مجموعة من الأسباب التي تشمل ارتفاع تكاليف البناء والتأمين وترافق قبضة صرف الدولار الأميركي، مشيراً إلى أن هذه العوامل كان لها أثر في الأسعار الحالية للعقارات، كما أشار إلى

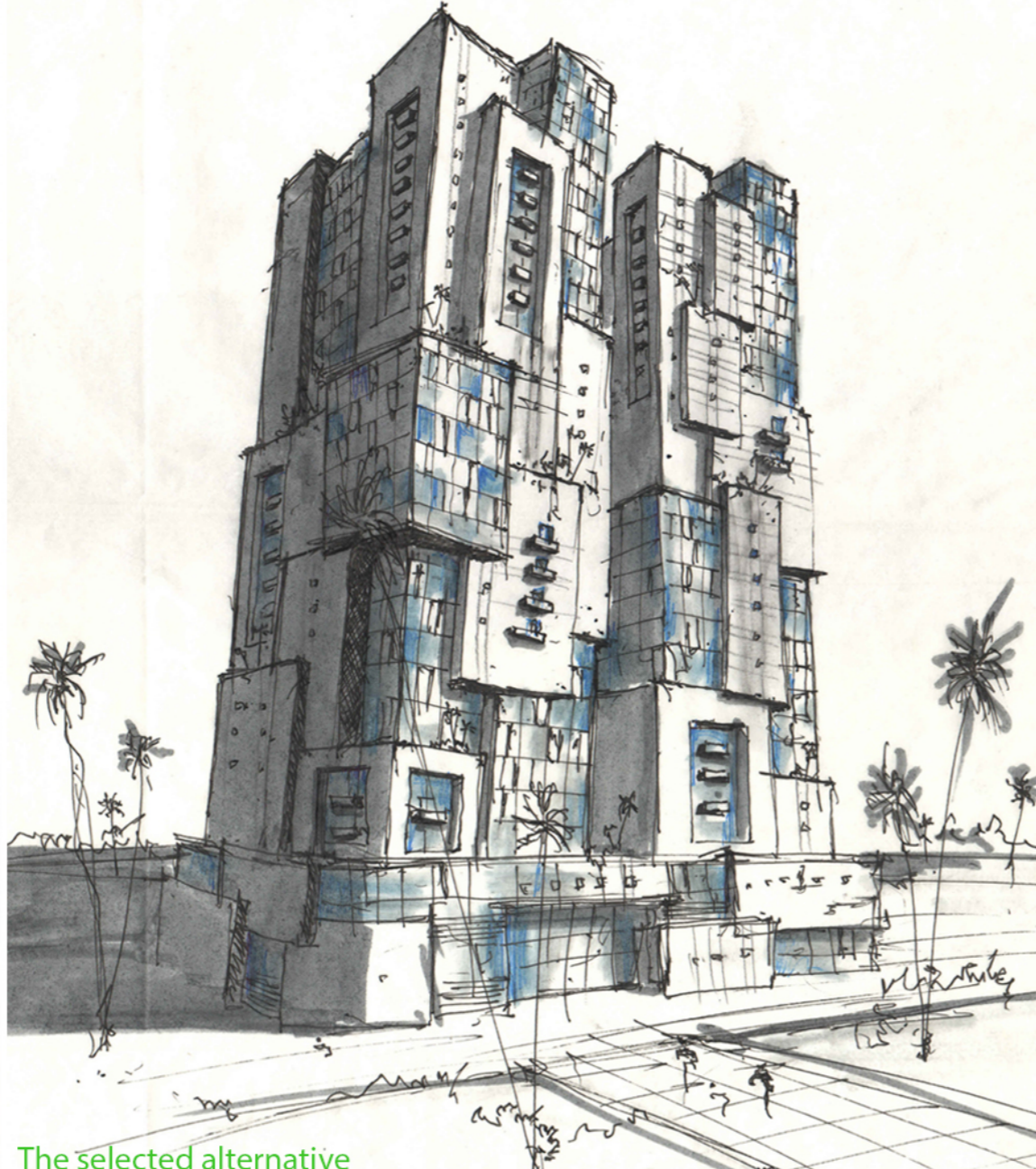
أبوظبي - أعلنت شركة العديد العقارية عن إطلاق مشروع أبراج العديد العقارية بقيمة ملياري درهم، والذي سيقام في جزيرة الريم بأبوظبي ضمن مشروع شمس أبوظبي الذي تنفذه شركة «صروح» العقارية بالجزيرة. ويتكون المشروع من 7 أبراج تضم 2400 وحدة سكنية وتجارية بحسب ما ذكره على شام الغيث رئيس مجلس إدارة الشركة أمس، والذي أكد أن الاتحاد أن فترة إنجاز المشروع ستستغرق 30 شهراً، مشيراً إلى البدء بالتنفيذ سيتم في الربع الثالث من العام الحالي وسيتم إنجازه في عام 2010.

## Al Odaid Beach Resident

August 2009

Al Reem Island, Abu Dhabi, U.A.E

## Design Concept



The selected alternative

## VISION

- ✓ To be recognized as the U.A.E.'s leading consultant providing unique and innovative design that makes a difference
- ✓ To become the most trusted consultant by providing our client the best quality engineering services to protect the things they value most

## VALUES

- ✓ Offer the right services which exceeds our clients' expectations
- ✓ Be partners in the development of our clients
- ✓ Be transparent
- ✓ Ensure client perceptions are secured
- ✓ Provide the best innovative ideas and excellence in design

## Our MISSION, VISION AND VALUES

## MISSION

- ✓ To ensure absolute client satisfaction by providing quality engineering services delivered with a strong commitment to materialize the dreams of our clients, as well as uphold respect for the environment

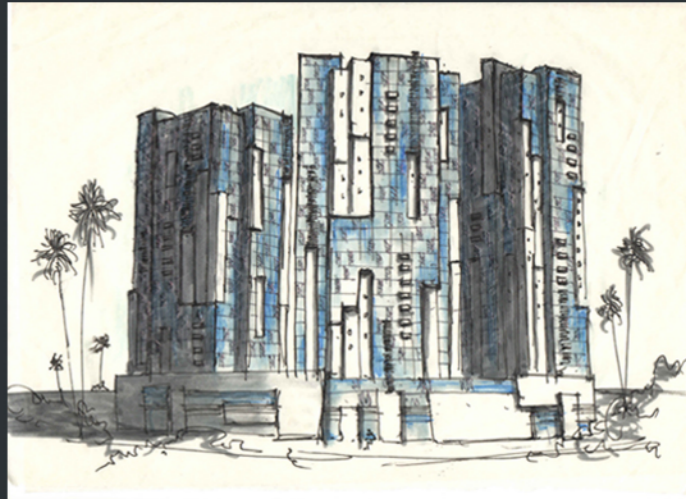
03 Alternative



02 Alternative



01 Alternative



## Bin Samikh Hotel Tower

April 2011  
West Bay, Doha, Qatar

in the mixed-use 41-floor Bin Samikh Tower, the hotel has 280 rooms and 37 suites ranging from the Executive Suite to the Royal Suite. It is owned by Tamniyat Qatar Real Estate Investment

### Detailed Scope

The tower involves construction of a tower comprising two basement levels, a ground floor, a mezzanine floor and 42 additional floors. The Bin Samikh will have 24 five star hotel suites, 170 residential apartments, 234 rooms of single and double wings, 192 serviced hotel apartments, four restaurants and conference halls for multiple purposes on an area of 1500 m2, a business centre, a swimming pool and a health club. For this project ACE was engaged to undertake a complete turnkey set of services from initial design to complete structural and MEP engineering design and MEP engineering components provision of project management and construction

ETABS 3D Structural Design & Value Engineering

- Urban Design & Planning
- Housing Complexes & Highrise Towers
- Hotel Resorts**
- Sports
- Educational
- Hospitals
- Services Complex & Mall
- Government
- Office Buildings
- Industrial & Stores
- Religious
- Residences Villas & Palaces
- Interior
- Special Projects -
- Value Engineering -
- Creative Solutions -

## Bin Samikh Tower

April 2011  
West Bay, Doha, Qatar

### Client

Mr. Salem Mohamed  
Salem Al Dhaheri

**Main Consultant:** DEC

### Project Description

This Project IS Hotel Suite  
, Tower consist of three basement  
ground, mezzanine and  
forty one floors

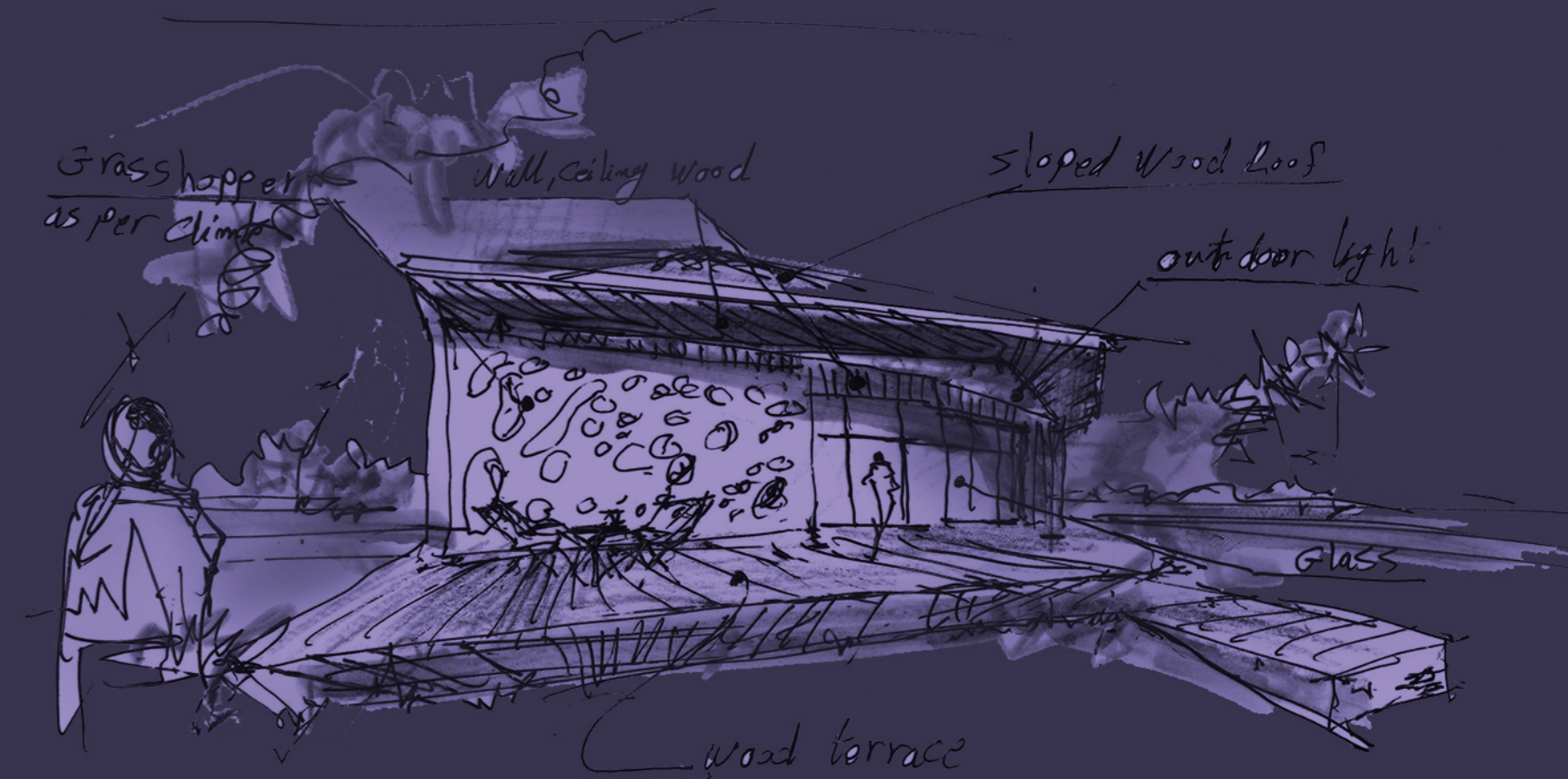
Total no. of floors is 69 floors -

**The structure system** is dual-  
system to resist the lateral loads  
of Earthquake & Wind and to  
enhance the behavior of the  
tower against the torsion irregularity



## Scope of work

Full Design & Supervision Consultancy Services



## Sunnyhill Hotel Complex Resort - phase b

December 2014  
Antigua, Caribbean Islands

**Scope of work**  
Structural Design & Value Engineering



THIS MODEL IS APARTMENT  
FOUNDED IN GROUND FLOOR WITH A  
TOTAL AREA 1291.66 SQ.FT IS  
DIVIDED INTO  
A LIVING ROOM AND 2 BEDROOMS  
ONE OF THEM CAN CONVERT TO  
PRIVATE STUDIO UNIT WITH SEPARATE  
ENTRANCE AREA 475.76 SQ.FT  
AND THE REST OF THE MODEL  
BECOMES A UNIT ONE BEDROOM WITH  
LIVING, KITCHEN, BATHROOM AND  
CHANGING ROOM. THIS TOTAL UNIT  
ARE BUILT ON A PLOT WITH AN AREA  
RANGING FROM 4305 SQ.FT) THE  
CONSTRUCTION RATIO IS 30% AND  
THE REST OF THE AREA IS PRIVATE  
GARDEN WITH AREA OF 70%



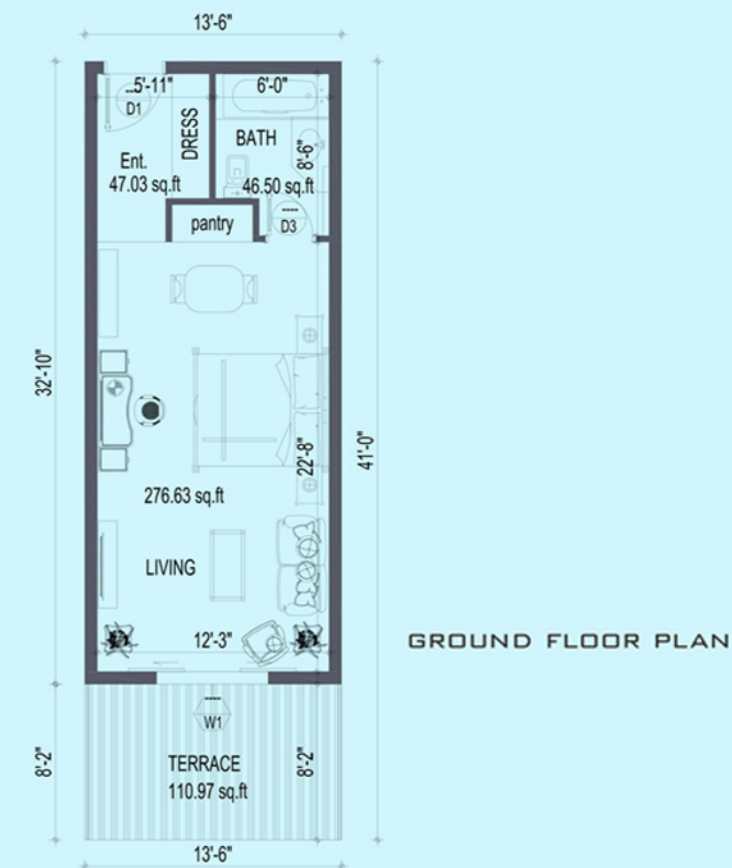


## 02 SNAPSHOT SUNNYHILL WILLOUGHBY BAY HOTEL COMPLEX RESORT

### 3D FURNITURE PLAN ST STUDIO PROTOTYPE



**Antigua  
and Barbuda**  
 **Sunnyhill Willoughby Bay**  
 December 2014  
 Antigua, Caribbean Islands



### ST STUDIO PROTOTYPE DESCRIPTION

THIS MODEL IS APARTMENT  
 FOUNDED IN GROUND FLOOR WITH A  
 TOTAL AREA 554.99 SQ.FT IS  
 DIVIDED INTO  
 SLEEP CORNER AND LIVING CORNER  
 WITH BATHROOM  
 AND CUPBOARD WALL, THIS UNIT IS  
 BUILT ON A PLOT WITH AN AREA  
 , (RANGING FROM 4305 SQ.FT  
 CONTAINS ON 1 BEDROOM ANDSTUDIO  
 OR 3 STUDIO THE CONSTRUCTION  
 RATIO IS 30% AND THE REST OF THE  
 AREA IS PRIVATE GARDEN WITH AREA  
 OF 70%

Hotel Resorts

Jumeira  
Dubai, U.A.E

La Plage 2 - Hotel Resort

September 2014  
Jumeira, Dubai, U.A.E

Hotel Resorts

LA PLAGE 2 is located on AL ATHAR Street, Jumeira, Dubai the design was taken as a reference from existing LA PLAGE 1 but the design idea depends on combining two clusters one is Residential and the other is Commercial with the same spirit of La PLAGE 1 with addition of distinctive modern design in line with the Theme .located in the region, with several facilities, amenities and luxury The built up area is 14243.28 sq.m and land area is 6004.60 sq

Full Design & Supervision Consultancy Services

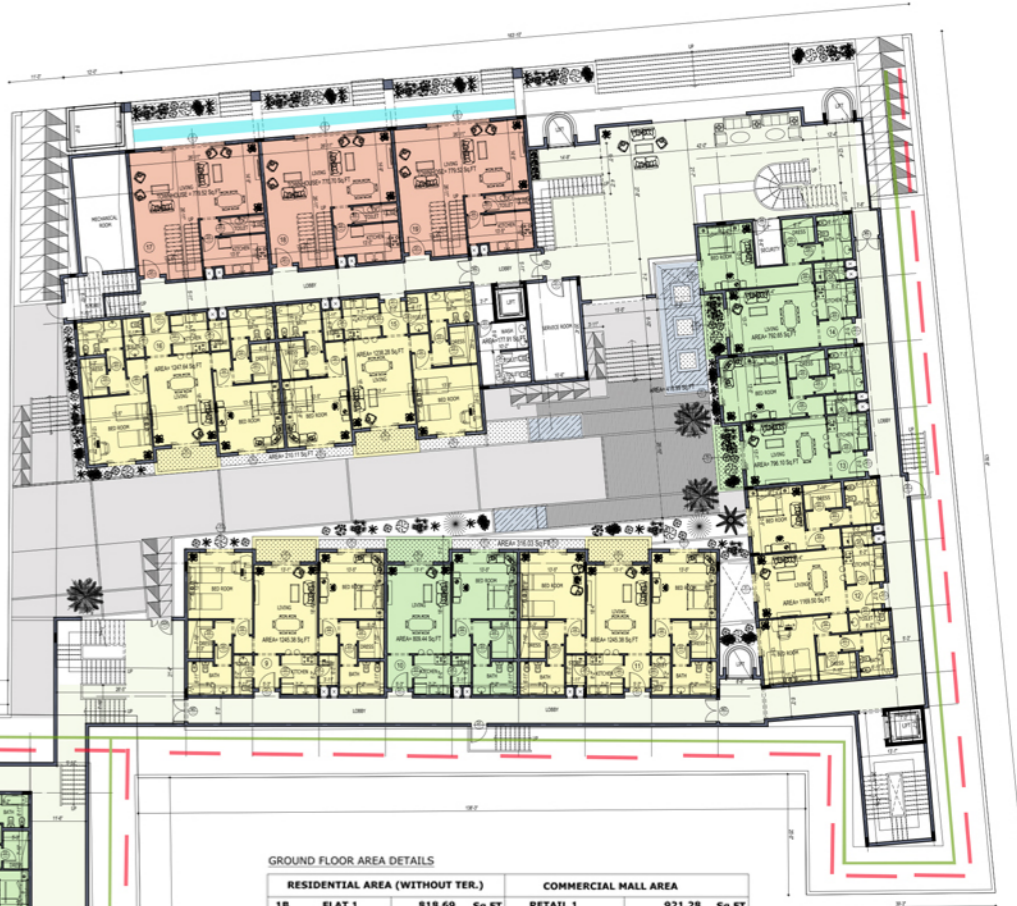
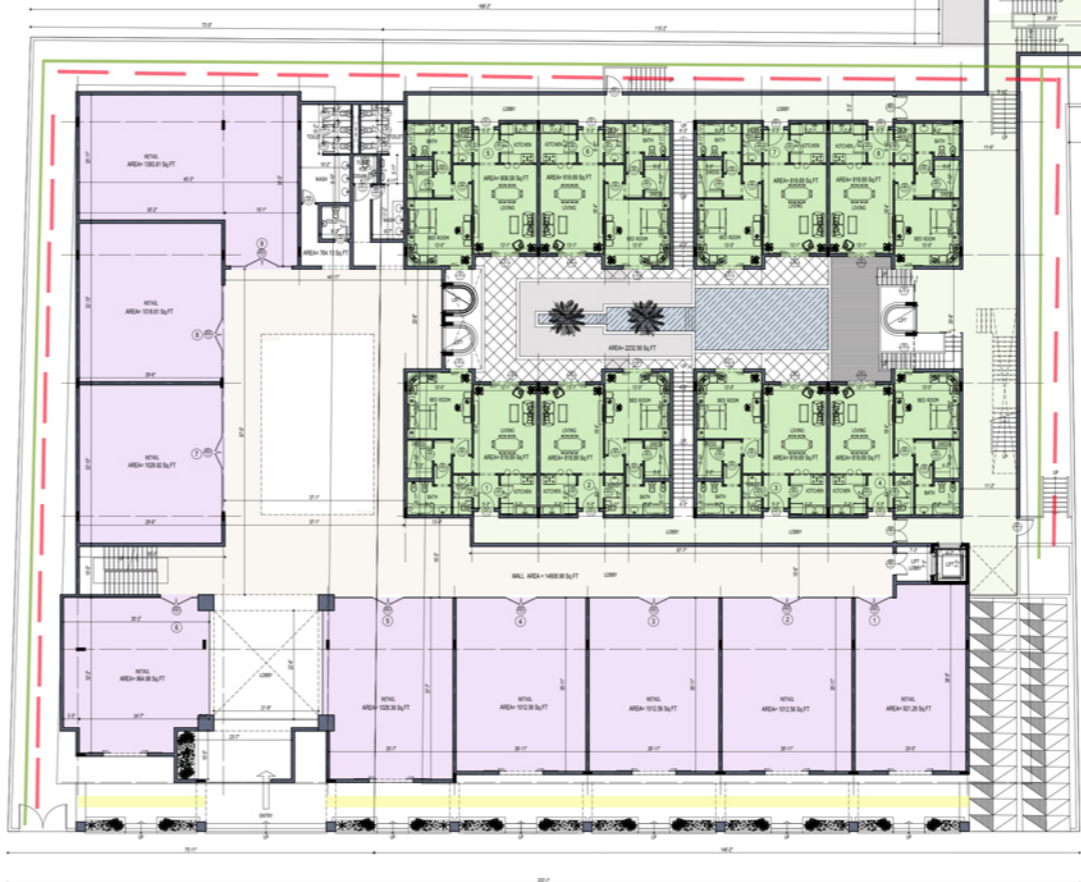


APARTMENT KEY

- TOWN HOUSE 03 FOUNDED IN GROUND, FIRST FLOOR
- ONE BEDROOM 11 IN THIS FLOOR FROM APARTMENTS 24
- TWO BEDROOMS 05 IN THIS FLOOR FROM APARTMENTS 24
- RETAILS 09 IN THIS FLOOR FROM RETAILS 18

LINE KEY

- SERVICE CORRIDOR
- ESCAPE CORRIDOR - EMERGENCY
- RETAILS ARCADE
- TOWNHOUSE GARDEN



GROUND FLOOR AREA DETAILS

RESIDENTIAL AREA (WITHOUT TER.)				COMMERCIAL MALL AREA			
18	FLAT 1	818.69	Sq.FT	RETAIL 1	921.28	Sq.FT	
18	FLAT 2	818.69	Sq.FT	RETAIL 2	1012.56	Sq.FT	
18	FLAT 3	818.69	Sq.FT	RETAIL 3	1012.56	Sq.FT	
18	FLAT 4	818.69	Sq.FT	RETAIL 4	1012.56	Sq.FT	
18	FLAT 5	808.59	Sq.FT	RETAIL 5	1028.38	Sq.FT	
18	FLAT 6	818.69	Sq.FT	RETAIL 6	964.98	Sq.FT	
18	FLAT 7	818.69	Sq.FT	RETAIL 7	1028.92	Sq.FT	
18	FLAT 8	818.69	Sq.FT	RETAIL 8	1018.91	Sq.FT	
28	FLAT 9	1236.02	Sq.FT	RETAIL 9	1393.81	Sq.FT	
18	FLAT 10	809.44	Sq.FT	TOILET RETAIL	9393.96	Sq.FT	
28	FLAT 11	1245.38	Sq.FT	TOILET	764.13	Sq.FT	
28	FLAT 12	1169.50	Sq.FT	SERVICE AREA	4651.19	Sq.FT	
18	FLAT 13	796.10	Sq.FT				
18	FLAT 14	792.65	Sq.FT				
28	FLAT 15	1238.28	Sq.FT				
28	FLAT 16	1247.64	Sq.FT				
	TOWN HOUSE 17	779.52	Sq.FT				
	TOWN HOUSE 18	770.70	Sq.FT				
	TOWN HOUSE 19	779.52	Sq.FT				
	TOTAL FLATS AREA	17404.17	Sq.FT				
	TOILET	177.91	Sq.FT				
	SERVICE AREA	9898.74	Sq.FT				
	TOTAL RESI. AREA	27480.82	Sq.FT	TOTAL MALL AREA	15573.46	Sq.FT	
	TOTAL RESI. %	64.63 %		TOTAL MALL %	35.36 %		
	PLOT 3420362			PLOT 3420116			
	TOTAL AREA	12214.99	Sq.FT	TOTAL AREA	23551.97	Sq.FT	
	BUILDING AREA	8842.84	Sq.FT	BUILDING AREA	16271.40	Sq.FT	
	TOTAL GROUND FLOOR AREA	42520.05	Sq.FT	TOTAL GROUND FLOOR AREA	42520.05	Sq.FT	

Ground Floor plan

Jumeira  
Dubai, U.A.E



OWNER OF TITLE

MR. ABDULJALIL YOUSUF DARWISH

LOCATION

JUMEIRA SECOND, DUBAI, U.A.E

## La Plage 2 Hotel Resort Commercial Area

September 2014  
Jumeira, Dubai, U.A.E

About 18 Retails Mixed use development landmark project which has spectacular post classic and modern indoor/outdoor retail facilities that would be attractive instead of ,creating a traditional mall structure. We tried to make it a downtown district full of cafes restaurants and retail outlets with open to sky areas on roof floor that overlook AL ATHAR Street. We ensured that our design embraced the activities That will be held in there

Full Design & Supervision Consultancy Services

Jumeira  
Dubai, U.A.E

➤ **La Plage 2 - Hotel Resort** Residential complex  
September 2014  
Jumeira, Dubai, U.A.E



Description

This landmark residential development has been designed in two shapes the first is U shape building and the other is rectangular with courtyard in the centre it's designed to meet the highest standards for residents to live in, and the entire district is a tranquil and secure place to live lined with facilities, cafes, gym, sauna and swimming pool. The development contains underground parking basements, extravagant swimming pool in the heart of the buildings on roof floor There are also 24 apartments with one bedroom, 9 with two bedrooms and 3 town houses all with distinctive and variable views

Dubai Marina  
Al Marsa st., Dubai, U.A.E



➤ **Buta Marina Hotel**

August 2013  
Dubai Marina, U.A.E

**Client**  
Buta In Group  
**Construction Cost**  
200,000,000.00  
**Project Contents**  
Marina hotel consists of 4 basement the first basement in sea level) Ground + 29) floor + Roof Service  
A) Underground Basement Floors (3Nos mainly for Parking and Services  
,B) First Basement Floor is for All Day Dining Function Hall, Theme Restaurant, Multi Hall and Services  
C) Ground and First Floor mainly to cater for the Guests, like customer desk, Retail areas, Meeting halls, Restaurant and .Prayer rooms  
D) Second Floor is dedicated for Swimming Pools, Gym, Steam and Sauna  
E) 3rd Floor to 29th Floors, are for Guest Rooms and Suites  
F) Mechanical Floor and Roof are for MEP

Scope of work  
Full Structural Desgin & Supervision Consultancy Services





## ➤ **ADHOM - Hotel & Office Tower**

December 2008  
Al Reem Island, Abu Dhabi

**Scope of work**  
Structural Design & Value Engineering

### Settingout Floor Plan



**Construction Cost**  
950,000,000.00 AED  
**Main Developer**  
Tamouh Investment  
**Main Consultant**  
Brewer Smith Brewer Gulf  
**Contractor**  
Brookfield Multiplex Construction  
**Project contents**  
The Tower contains offices in typical floors and parking areas in podium & basement floors. There is also a 5 stars hotel next to the tower with luxury rooms .and services  
**Number of cars**  
the basement floors  
.designed to accommodate 1600 cars  
**Structure system:** Composite (steel (and concrete  
**Number Of Floor**  
typical floors 60



## ➤ King Saud University Stadium

December 2010  
Riyad, Saudi Arabia

Urban Design & Planning  
Housing Complexes & Highrise Towers  
Hotel Resorts

### Sports

Educational  
Hosptials  
Services Complex & Mall  
Government  
Office Buildings  
Industrial & Stores  
Religious  
Residences Villas & Palaces  
Interior

- Special Projects -
- Value Engineering -
- Creative Solutions -

Scope of work  
Full Desgin & Consultancy Services

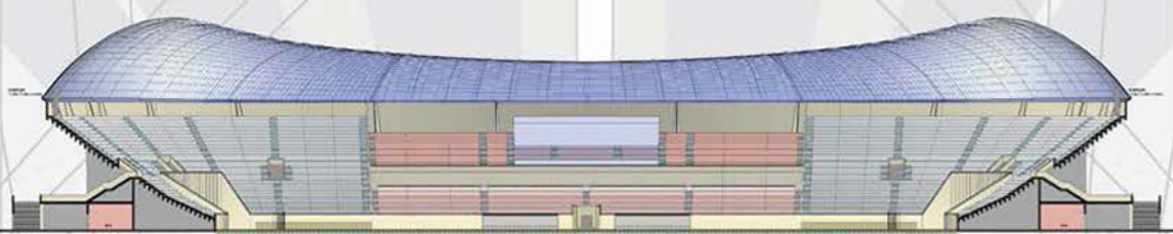
«الأول» للاستشارات الهندسية ينهى التصميم  
النهائي لمشروع استاد جامعة الملك سعود بالرياض



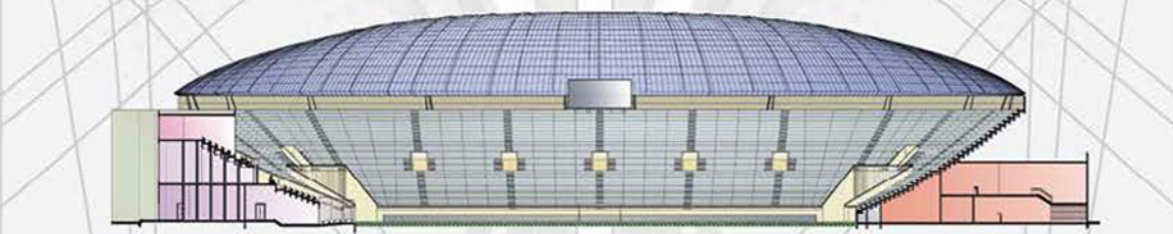
# Stadium Project with a capacity of 25,000 spectators

## King Saud University (K.S.U.)

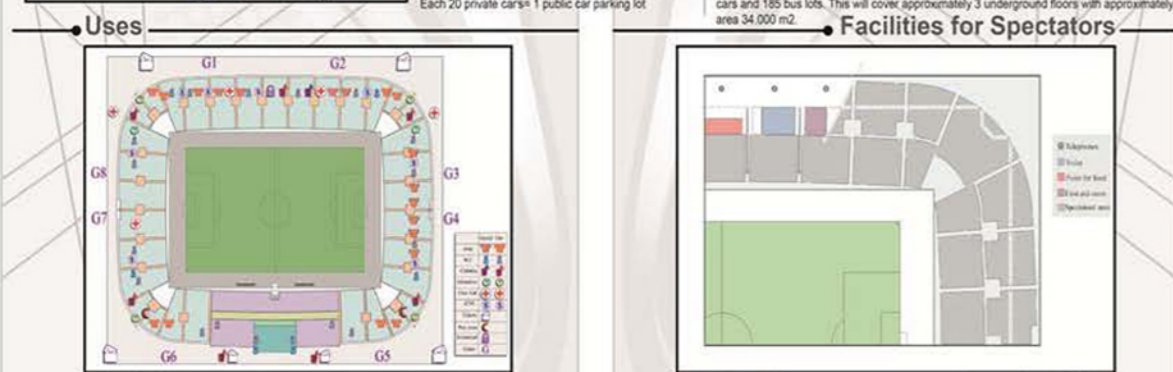
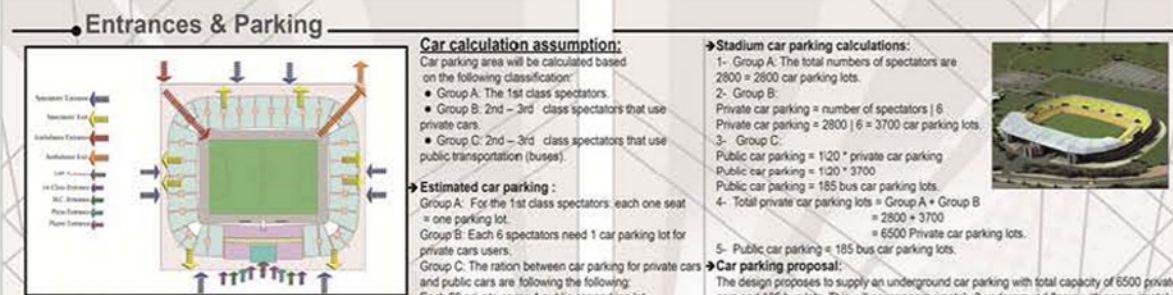
Riyadh City – K.S.A.



Section A-A



Section B-B



## King Saud University Stadium

December 2010  
Riyad, Saudi Arabia

Construction Cost

220,000,000.00AED

Client

King Saud University - KSU

Location

King Saud University - Riyadh city - KSA

Project Contents

Stadium with a capacity of 25000 spectators

divided in 4 classes; VIP class, 1st

class, second class and third class

The design of the stadium provide separation in

the entrances of the several classes beside

separation of player entrance, press

entrance and handicapped entrance

Also there are a specific entrance for emergency

ambulance cars. The design of the stadium is &

matching all FIFA regulation

The design of the stadium contains a lot of services

like; shops, first aid rooms, bathrooms

information desks beside player facilities

VIP facilities from restaurants

lounges and cafeterias. The whole grandstands

are covered by shade that compatible

with the KSA climate





## King Saud University Stadium

December 2010  
Riyad, Saudi Arabia



## Scope of work

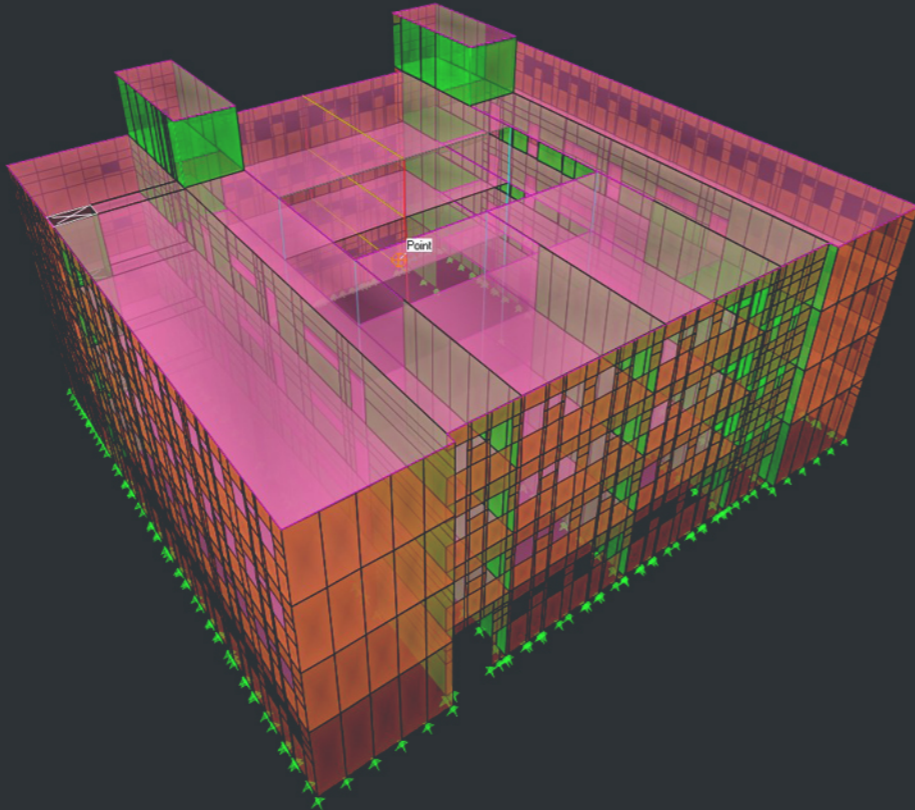
### Full Design & Consultancy Services

The King Saud University Stadium in Riyadh, the capital and largest city of Saudi Arabia, is a new football stadium located at the King Saud University (KSU). The new 25000-seat stadium is compliant with the specifications of football's major governing authorities, including FIFA, and meets the increasingly advanced requirements of high definition TV broadcasting. The stadium will be home of the famous KSU football team, and also host local regional and international matches. The stadium features an elegant metallic structure, which is enclosed by a concrete wall, and that is made up of geometrical metallic elements that provide this splendid construction with a flexible and wavy appearance. Carefully designed elements and excellent finishes give the King Saud Stadium a modern and distinctive look, while ensuring an adequate level of ventilation. The new stadium has 22,800 seats for general viewers, plus several seats for VIPs and special enclosures for the members of the royal family and their guests. The stadium is also equipped for disabled viewers: it provides special entrances and 130 seats for wheelchair bound people and their accompanying carers, plus an adequate number of lifts and bathrooms.

م	المدرسه	Gender	Prototype
1	إبتدائية الجراديه	B	21
2	إبتدائيه الجراديه الثانيه	G	12
3	مبنى الجراديه	K	6
4	إبتدائيه و متوسطه البيسرى	B	21
5	إبتدائية الجروب	G	12
6	إبتدائية و متوسطة الوند	G	18
7	إبتدائية الدريعيه	G	18
8	متوسطة ابن حزم و ثانوية النى الشرقى المعنه	B	21
9	إبتدائية الراحه	G	18
10	مبنى القفل	K	6
11	ثانوية اللقيه	B	15
12	ثانوية اللقيه	G	18
13	متوسط شعب الذئب	G	12
14	إبتدائية صاحب البار	G	12
15	ثانوية النجاميه	G	18
16	الشيخ حافظ الحكيمى الثانوية	B	26
17	الفرعوى الثانوية	B	26
18	الثانوية الرابعه	G	18
19	جمع الشيخ ناصر خلوقة للتخفيف	B	15
20	بتدائية الأمير نايف بن عبدالعزيز	B	21
21	ثانوية الظيره	B	15
22	متوسطة الظيره	G	12
23	مبنى الظيره	K	4
24	إبتدائية ومتوسطة الوحله	B	21
25	إبتدائية الوحله	G	18
26	إبتدائية عقده الحكاميه	G	12
27	ثانوية المروه	B	21
28	إبتدائية أم السعنون	G	12
29	إبتدائية ومتوسطة سودانه	G	18
30	إبتدائية ومتوسطة المقاطيه	G	12
31	ثانوية الخويه	B	26
32	إبتدائية المعطن	G	12
33	ثانوية الجعديه	B	21
34	إبتدائية ومتوسطة البيطاريه	B	21
35	متوسطة المنجاره	B	15
36	إبتدائية المقرم	G	18
37	إبتدائية الخويه	B	15
38	ثانوية المنجاره	B	15
39	إبتدائية الغصينيه	B	15
40	مبنى الحامضه	K	6
41	إبتدائية و متوسطه جحا	G	18
42	مبنى جحا	K	6
43	إبتدائية السر	G	12
44	ثانوية مزهره	G	18
45	المتوسطه الثانيه بالأحد	G	18
46	مبنى الغصينيه	K	6
47	إبتدائية رماده خلب	G	12
48	إبتدائية المقرم	B	15

Scope of work Full Structure Desgin

48 Schools at jazan City, K.S.A



شاركست بر ارفع بخططه تطوير المنظومه التعليميه بالمملكه العربيه السعوديه - بمنطقة جازان) والتي تهدف إلى إضافة فعائيه وأربعون) مدرسه تعليميه تلبي كافة المراحل التعليميه بنين وبنات وذلك بأسناو كافة أرحمال التصميمات والأشائيه لشركت المدراس البريمم مهندسون (استشاريون) .



- Urban Design & Planning
- Housing Complexes & Highrise Towers
- Hotel Resorts
- Sports
- Educational
- Hosptials
- Services Complex & Mall
- Government
- Office Buildings
- Industrial & Stores
- Religious
- Residences Villas & Palaces
- Interior
- Special Projects -
- Value Engineering -
- Creative Solutions -

Educational



## Prince Saultan Advanced Research Technology Institute - PSARTI

March 2010  
Riyadh city, K.S.A

**Client:** King Saud University - KSU

**Concept Designer:** JunGlim Architect

**Main Consultant/Sharing in the Design :** Prime Engineering Consultants

### Project Contents

Project consists of one main building with three wings, and contains one basement floor beside 4 typical floors. The basement floor contains several labs and workshops .beside parking area and mechanical area  
& The building is designed to make a separation between male & female entrances .facilities

The ground floor contains administration zone , auditorium and some labs

The other 4 typical floors contain some other labs, workshops and classrooms

### The uses of the building are divided into four zones

- ✓ administration & resource department
- ✓ Research & development department
- ✓ Facilities department
- ✓ Community service & public zone department



**March, 2010**

**RIYADH:** Prince Khaled bin Sultan, assistant minister of defense and aviation, laid the foundation stone for Prince Sultan Advanced Technological Research Institute at Riyadh Techno Valley of King Saud University here on Sunday

He also watched the signing of an agreement between Abdullah Al-Othman, president of the university and supervisor of the institute, and 10 international companies including BAE, Boeing and Advanced Electronics  
Later addressing the ceremony, Prince Khaled highlighted the support of Crown Prince Sultan, deputy premier and minister of defense and aviation for the advancement .of science and technology in the Kingdom

He said the institute would contribute to the transfer of technology to the Kingdom

**Scope of work**  
**Full Design & Consultancy Services**

# K - Zone School Yas Island

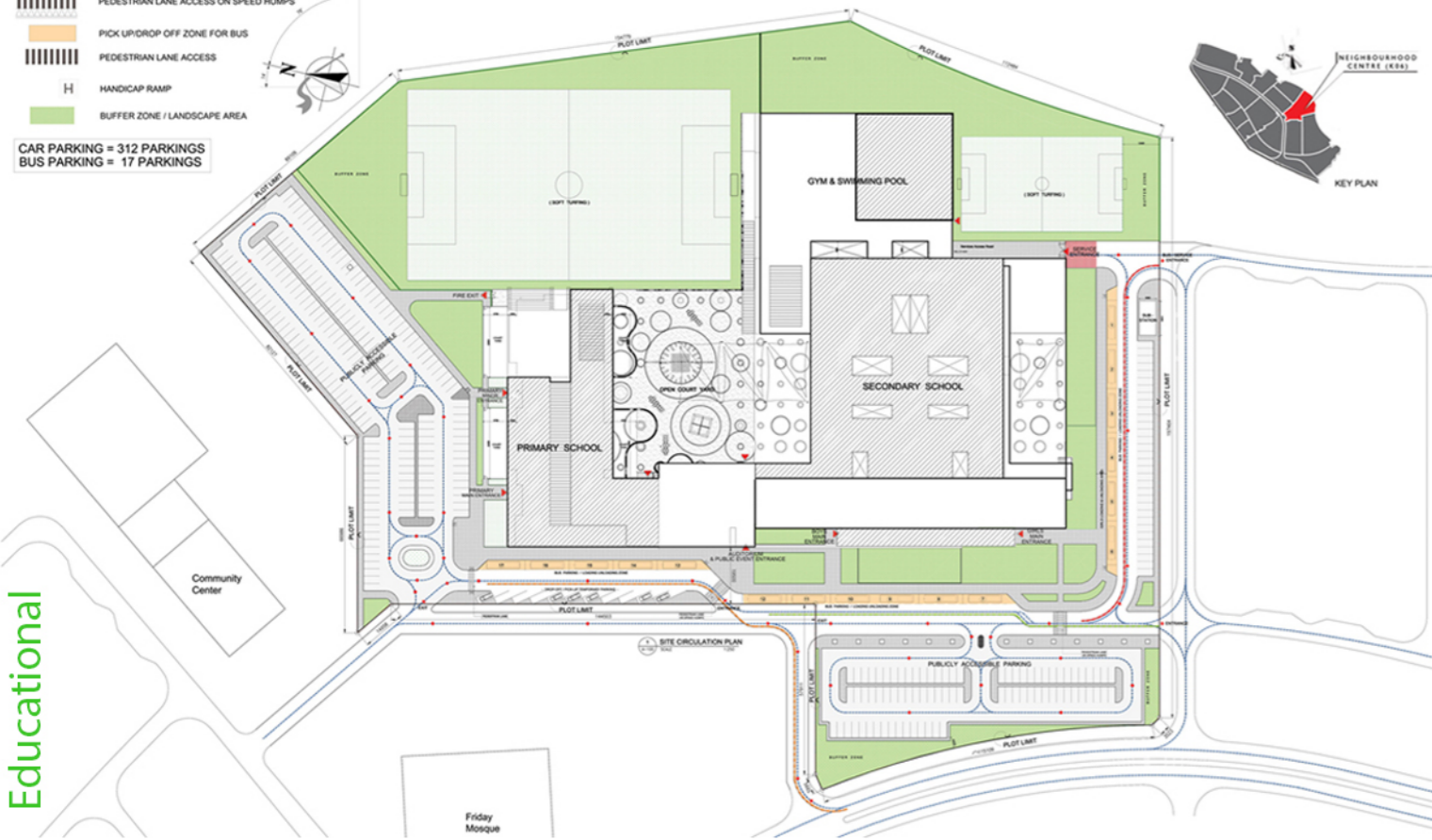
September 2012  
Yas Island, Abu Dhabi, U.A.E

Client  
AL DAR  
Main Consultant  
.RW ARMSTRONG

## LEGEND:

- VEHICULAR ACCESS
- BUILDING ENTRANCE
- GENERAL VEHICLE ACCESS ROUTE
- SERVICE BUS ROUTE FOR GIRLS / SECONDARY
- SERVICE BUS ROUTE FOR BOYS / SECONDARY
- SERVICE BUS ROUTE FOR PRIMARY
- PEDESTRIAN LANE ACCESS ON SPEED HUMPS
- PICK UP/DROP OFF ZONE FOR BUS
- PEDESTRIAN LANE ACCESS
- HANDICAP RAMP
- BUFFER ZONE / LANDSCAPE AREA

CAR PARKING = 312 PARKINGS  
BUS PARKING = 17 PARKINGS



Scope of work  
Full Structure Design & Local consultant



Hospitals

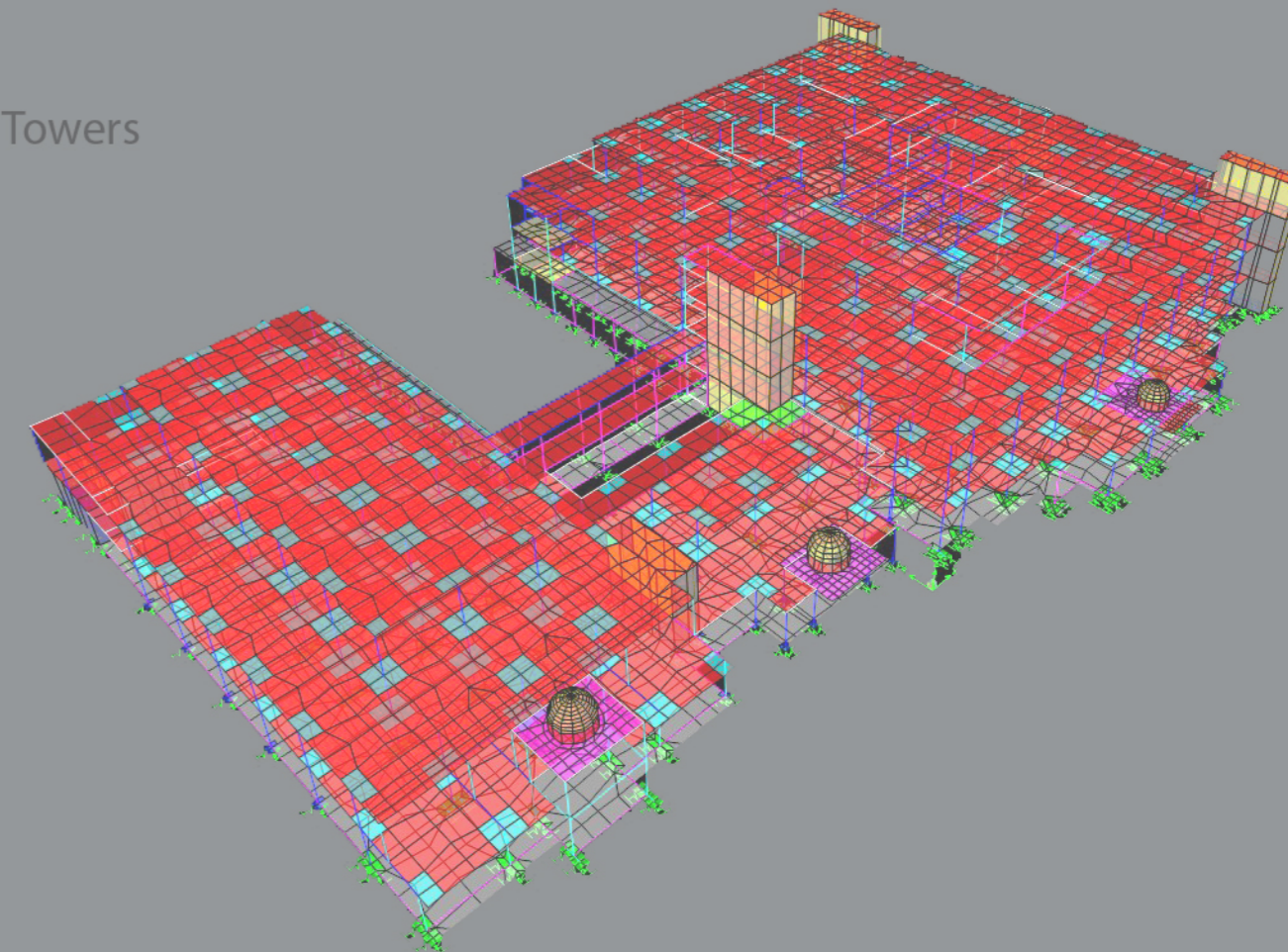
Scope of work Full Structure Design

## ➤ National Rehabilitation Center - NRC

July 2014  
Abu Dhabi Island, U.A.E

Urban Design & Planning  
Housing Complexes & Highrise Towers  
Hotel Resorts  
Sports  
Educational  
**Hospitals**  
Services Complex & Mall  
Government  
Office Buildings  
Industrial & Stores  
Religious  
Residences Villas & Palaces  
Interior

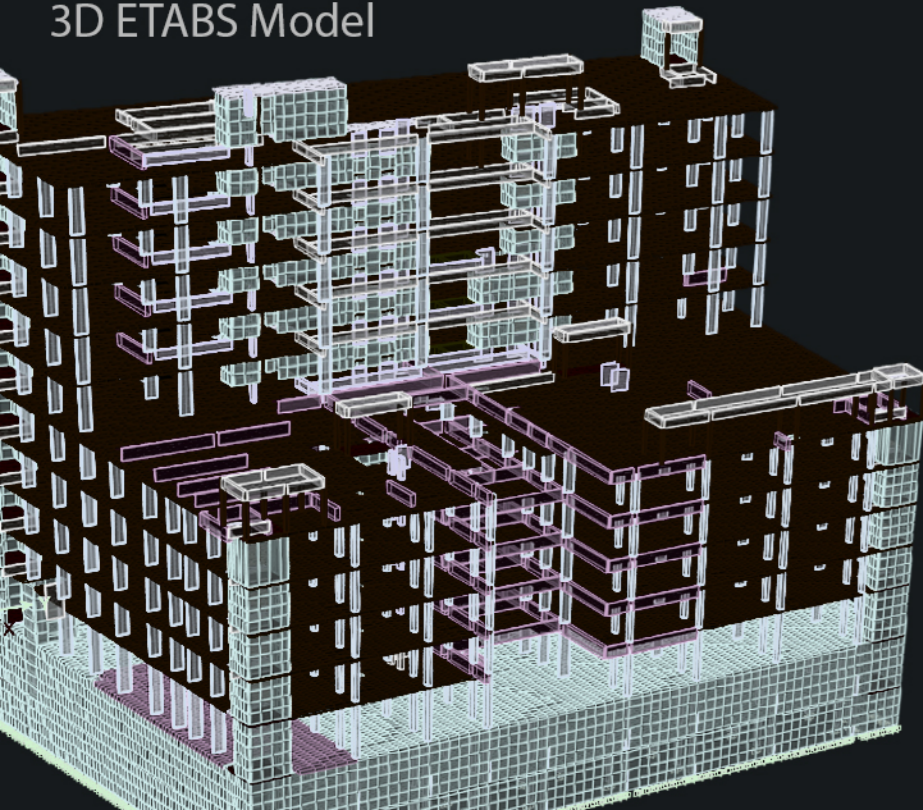
- Special Projects -
- Value Engineering -
- Creative Solutions -



3D ETABS Model



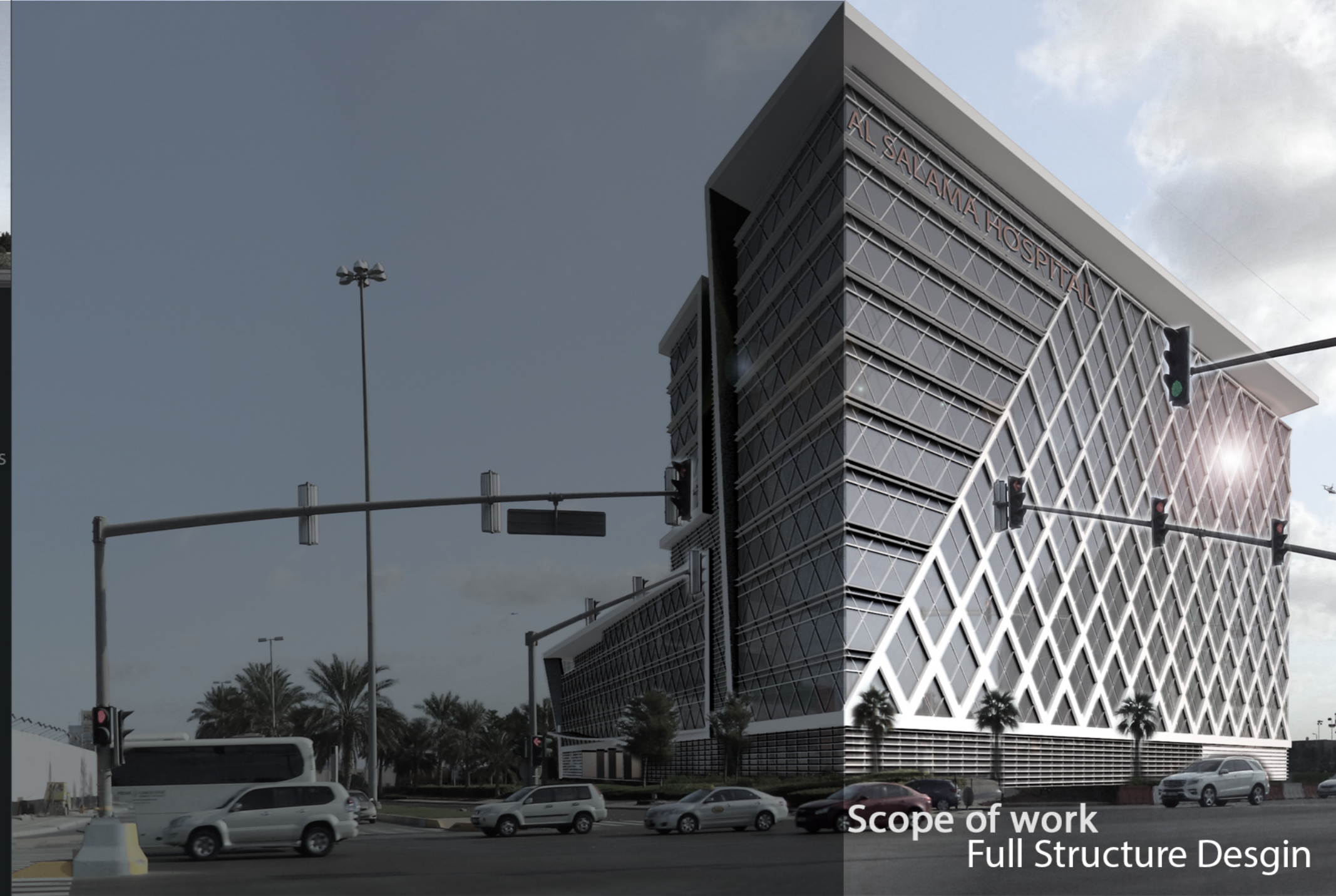
3D ETABS Model



➤ **Al Salama Private Hospital**  
 September 2014  
 Abu Dhabi Island, U.A.E

Owenr  
 Al Salama Hospitals  
**Main Consultant**  
 HDP - healthcare designers & project managers  
**Project Description**  
 Tow Basments + Ground + Four Podiums + Seven Floors

**STR.**  
 solutions



**Scope of work**  
 Full Structure Desgin

## Al Touraif Highway Center

March 2015  
Abu Dhabi, U.A.E

- Urban Design & Planning
- Housing Complexes & Highrise Towers
- Hotel Resorts
- Sports
- Educational
- Hospitals
- Services Complex & Mall
- Government
- Office Buildings
- Industrial & Stores
- Religious
- Residences Villas & Palaces
- Interior
- Special Projects -
- Value Engineering -
- Creative Solutions -



Client  
Al Saharaa Group  
Construction Cost  
130,000,000.00 AED  
Project Contents  
two Separate Zones  
A) First - motel Mall and ambulatory units  
mosque car maintenance service  
B) Second - Housing workers and building  
information and another for food

Services Complex & Mall



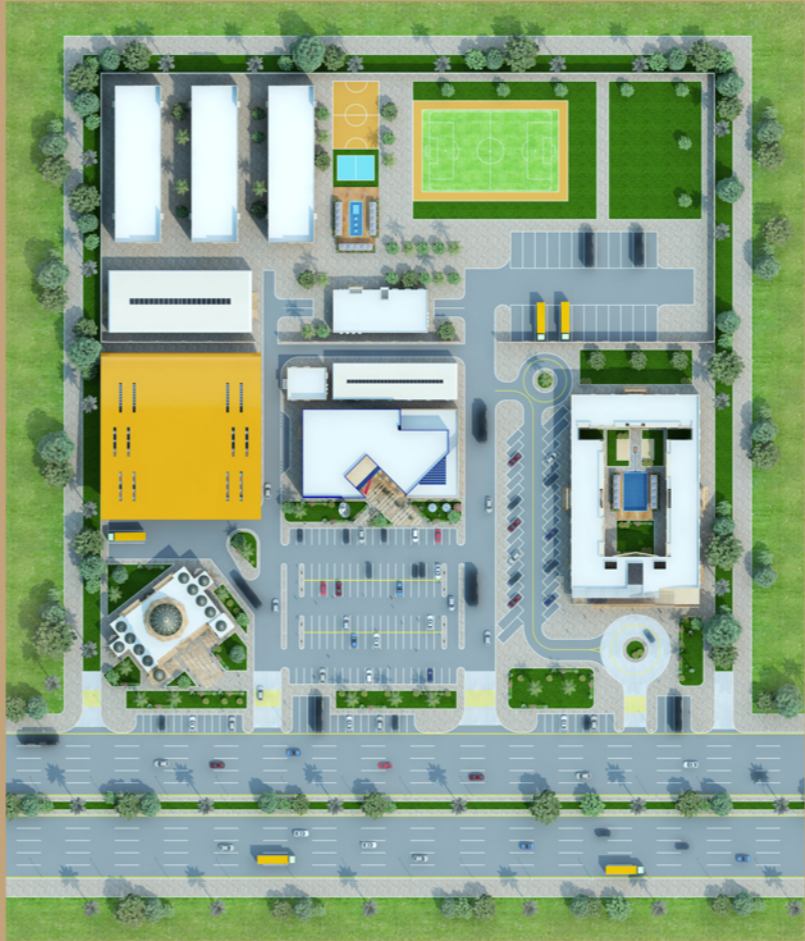
Ground Floor Plan



Al Touraif Highway Center  
March 2015  
Abu Dhabi, U.A.E

Scope of work  
Full Desgin  
Consultancy Services

Master Layout



Not: all Areas with M2						
NO	BUILDING NAME	NUMBERS	FLOORS	AREA FOR UNUT		TOTAL FOR ALL BUILDINGS
				COVERD	BUILTUP AREA	
1	HOUSING WORKERS	3	3	5826.39	5826.39	11652.78
	BED ROOM	162				
	FOOTBALL PLAYGROUND	2		900+330		
	HANDBALL PLAYGROUND	1				
2	MESS BUILDING	1	1	952.68		952.68
	SITING	288				
	BIG VEHICLE PARKING	2				
3	IFORMATION BUILDING	1	1	417.54		417.54
	COUNTER	9				
	OFFICE	5				
	BIG VEHICLE PARKING	26				
4	MASJID	1	1	778		778
	FOR MEN	270				
	FOR LADIES	23				
	CAR PARKING	14				
5	CAR SERVICE CENTER	1	1	2925		2925
	SMALL VEHICLE SERVICE	6				
	BIG VEHICLE SERVICE	5				
	BIG VEHICLE PARKING	4				
6	CAR SERVICE OFFICE	1	1	134.4		134.4
7	UTILITIES BUILDING	1	1	487.2		487.2
8	MALL BUILDING	1	2	1438	669.07	2107.07
	HYPER MARKET	1				
	SHOPS	8				
	BAZAR	3				
	RETAIL	2				
	FOOD COUNTER	8				
	FAMILY ROOM	4				
	RESTAURANT SITING	132				
	PHARMACY	1				
	DOCTOR ROOM	2				
	TREATMENT ROOM	2				
	CAR PARKING	128				
	BIG VEHICLE PARKING	5				
9	MOTEL	1	2	2820.73	2328.02	5148.75
	BED ROOM	48				
	COFFEE	26				
	RESTAURANT SITING	136				
	CAR PARKING	42				
	BIG VEHICLE PARKING					
TOTAL BUILDING AREA						24603.42



➤ **Al Touraif Highway Center**  
March 2015  
Abu Dhabi, U.A.E

AL TORAIF mall, masjid, Automotive service center

Services Complex & Mall



## Al Touraif Highway Center

March 2015  
Abu Dhabi, U.A.E

Al TORAIF motel



## **Al Touraif Highway Center**

March 2015  
Abu Dhabi, U.A.E

Motel Interior

Services Complex & Mall



## **Scope of work** Full Design Consultancy Services

## **Al Rwasi Shopping Mall**

November 2009  
Abu Dhabi, U.A.E

Client  
Al Rwasi Real Estate Develop  
Construction Cost  
66,000.00 AED  
Project Contents  
Ground floor  
for super market+ first floor for  
shops and Second floor for shops  
and Food court  
Number of floor  
Basement 1  
Ground + 2 typical floors+  
Structure System : Flat slab



## Al Touraif Mall & Succor Highway

January 2015  
Abu Dhabi, U.A.E

Services Complex & Mall



**Al Ain - Commercial Center**

October 2009  
Al Ain, U.A.E

## Competition

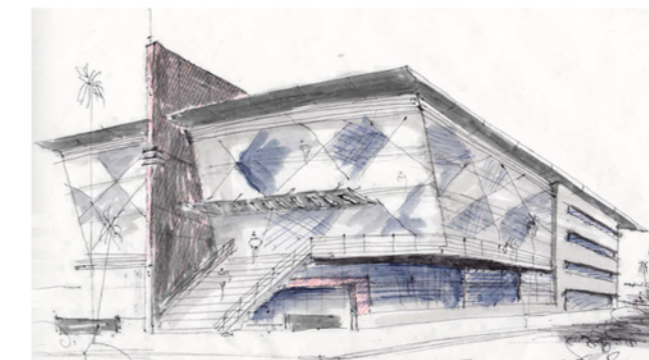
Client

General Authority Of Islamic  
Affairs & Endowments

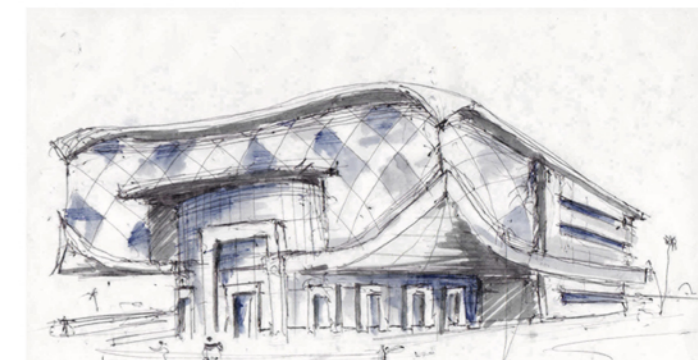
Construction Cost  
160,000.00 AED

Project Contents

,Ground and First floor for Hayper Markt & outlets  
Second floor contains Amusement park for children  
and Basment contains Stores & Parking Area



02- Alternative



01- Alternative

Client

Al Saharaa Group  
Construction Cost  
5,000,000.00 AED

Project Contents

Restaurant, cafeteria, pharmacy , first aid clinics  
shops reserve your flight tickets and change ,  
segments Mobil , rental cars, Bazaars Gifts  
and Change money



Ground floor plan



First floor plan

## Scope of work

Full Desgin & Consultancy Services

## ➤ Crime Scene - Training village

January 2010  
Abu Dhabi, U.A.E

Urban Design & Planning  
Housing Complexes & Highrise Towers  
Hotel Resorts  
Sports  
Educational  
Hospitals  
Services Complex & Mall  
Government  
Office Buildings  
Industrial & Stores  
Religious  
Residences Villas & Palaces  
Interior  
- Special Projects -  
- Value Engineering -  
- Creative Solutions -

Government Buildings

Competition



## Crime Scene - Training village

January 2010  
Abu Dhabi, U.A.E

### Full Concept Design Architectural & Structural



#### Client

Police Project Committee

#### Construction Cost

50,000,000.00 AED

#### Project Contents

Project consist of 4 building  
Building A - Administration building  
Building B - Students and Teachers  
Accommodation  
Building C - Training Building  
Building D - Villa Training Building  
Number Of Floor  
From Ground to 3 Floors

Government Buildings



Competition



## ➤ **Kazakhstan Embassy & Ambassador Res.**

February 2010  
Abu Dhabi, U.A.E

Government Buildings

Client  
Republic of Kazakhstan  
Construction Cost  
30,000,000.00  
Project Contents <sup>AED</sup>  
Main embassy building, Ambassador's  
Residence and fitness club  
Number Of Floor  
.Ground +1stfloor



Full Design & Supervision Consultancy Services



Client  
 Republic of Turkey  
 Construction Cost  
 37,500,000.00 AED  
 Project Contents  
 Main embassy building and  
 Ambassador Residence  
 Number Of Floor  
 Ground + 1st floor



Government Buildings

Full Design &

Supervision Consultancy Services  
 Architectural & Structural

➤ **Turkish Embassy & Ambassador Res.**  
 February 2010  
 Abu Dhabi, U.A.E



## Office Buildings

### Hydra Rakeen Tower

August 2008  
Ras Al Khaimah, U.A.E

#### Client

Sheikh Tahnoon

#### Main Developer

Tamouh Investments

#### Construction Cost

1,344,707,000.00 AED

#### Project contents

The project  
designed for open office spaces  
in typical floors, show room in  
ground floor and parking areas  
..in basement floors

#### Structure system

Composite  
system between steel and concrete  
.structure



Scope of work Full Design Consultancy Services

Urban Design & Planning  
Housing Complexes & Highrise Towers  
Hotel Resorts  
Sports  
Educational  
Hospitals  
Services Complex & Mall  
Government  
**Office Buildings**  
Industrial & Stores  
Religious  
Residences Villas & Palaces  
Interior  
- Special Projects -  
- Value Engineering -  
- Creative Solutions -

برسی



شاركت برادع مهندسون استشاريون بالمسابقات المعمارية بمنطقة الشرق الأوسط أيماناً بروح التنافس والابتداع  
وقد تنوعت مشاركتنا لتشمل المباني اللاحقة والمراكز التجارية والمجمعات السكنية والمباني الحكومية.

## Competition



### AL Ain - Office Building

October 2010  
Al Ain, Abu Dhabi, U.A.E

## Office Buildings

### Rawdet Abu Dhabi Office Building

February 2010  
Air Port Road, Abu Dhabi, U.A.E

#### Client

Injaz Mena Investment

#### Main Developer

Reem Developer

#### Construction Cost

120,000,000.00 AED

#### Project contents

Open spaces for office - show rooms

parking area in basement floors -

#### Structure system

Composite

system between steel and concrete  
structure

#### Number Of Floor

Ground + mezzanine

1st floor + 12 typical floors + 3 +

basement floors

Parking Area : 180 car



## Competition

### ➤ **AL Ain - Office Building**

October 2010  
Al Ain, Abu Dhabi, U.A.E

#### Client

IGeneral Authority Of Islamic  
Affairs & Endowments

#### Project contents

Open spaces for office - show rooms  
parking area in basement floors -

#### Number Of Floor

Ground + mezzanine  
4typical floors + 2basement floors

**Parking Area : 75 car**



## Office Buildings

### ➤ **EDGE - Office Building**

September 2010  
Abu Dhabi, U.A.E

#### Client

IGeneral Authority Of Islamic  
Affairs & Endowments

#### Project contents

Open spaces for office  
parking area in basement floors -

#### Number Of Floor

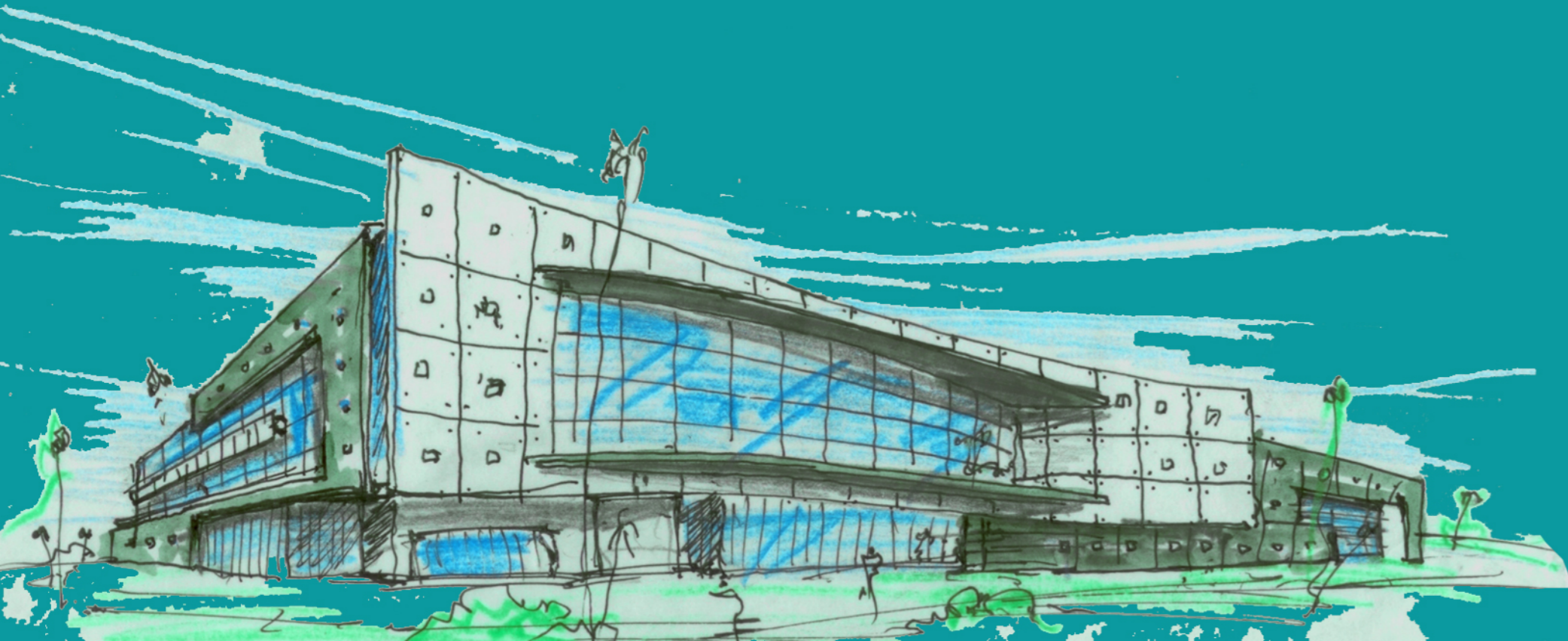
Ground + mezzanine  
4typical floors + 2basement floors

**Parking Area : 75 car**



## Scope of work

Full Structure Desgin & Consultancy Services



## 7-Warehouse - Industrial Buil.

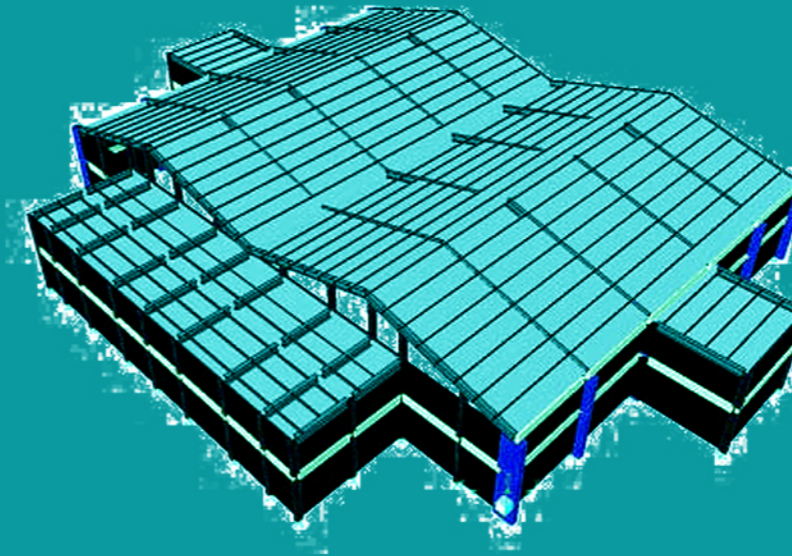
March 2009  
Abu Dhabi, U.A.E

**Client**  
ARKAN

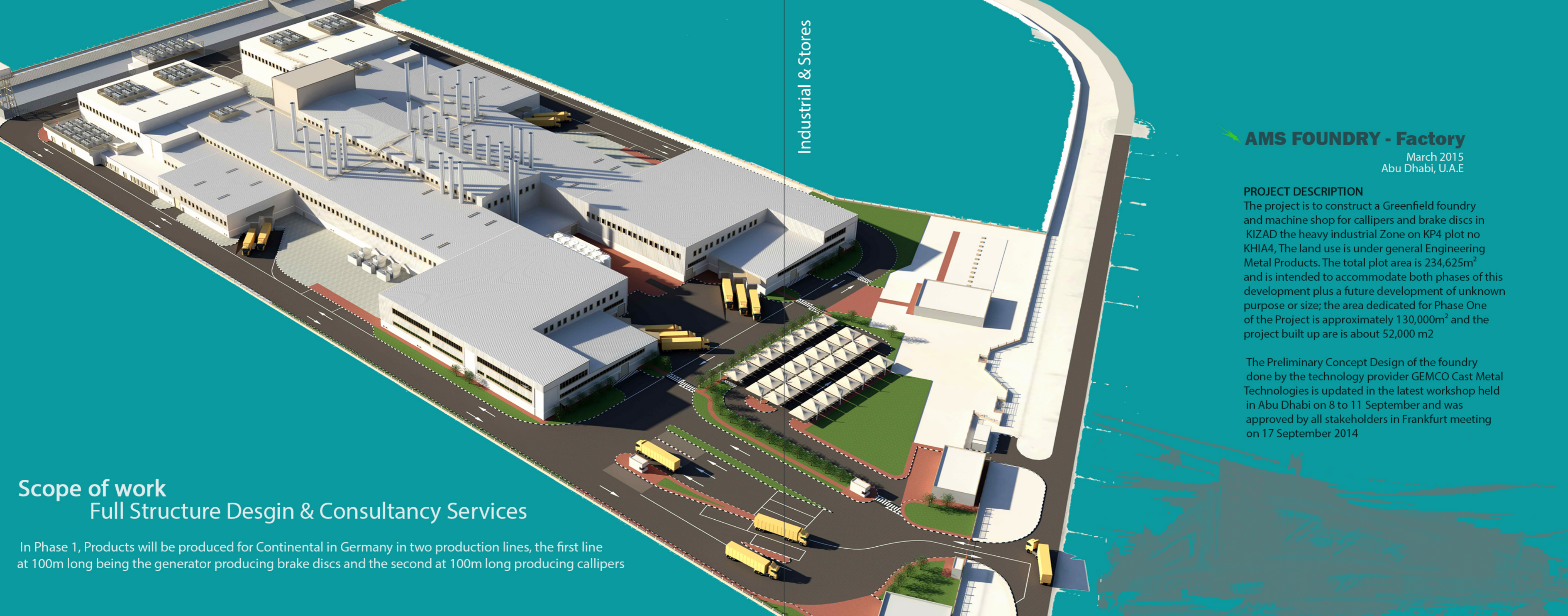
**Main Consultant**  
Stanley Consultant

**Project contents**  
This Project consist of seven  
.warehouse

**Structure System**  
The structure system is steel  
.structure



Urban Design & Planning  
Housing Complexes & Highrise Towers  
Hotel Resorts  
Sports  
Educational  
Hospitals  
Services Complex & Mall  
Government  
Office Buildings  
Industrial & Stores  
Religious  
Residences Villas & Palaces  
Interior  
- Special Projects -  
- Value Engineering -  
- Creative Solutions -



Industrial & Stores

## AMS FOUNDRY - Factory

March 2015  
Abu Dhabi, U.A.E

### PROJECT DESCRIPTION

The project is to construct a Greenfield foundry and machine shop for callipers and brake discs in KIZAD the heavy industrial Zone on KP4 plot no KHIA4, The land use is under general Engineering Metal Products. The total plot area is 234,625m<sup>2</sup> and is intended to accommodate both phases of this development plus a future development of unknown purpose or size; the area dedicated for Phase One of the Project is approximately 130,000m<sup>2</sup> and the project built up area is about 52,000 m<sup>2</sup>

The Preliminary Concept Design of the foundry done by the technology provider GEMCO Cast Metal Technologies is updated in the latest workshop held in Abu Dhabi on 8 to 11 September and was approved by all stakeholders in Frankfurt meeting on 17 September 2014

## Scope of work Full Structure Design & Consultancy Services

In Phase 1, Products will be produced for Continental in Germany in two production lines, the first line at 100m long being the generator producing brake discs and the second at 100m long producing callipers



Scope of work  
Full Structure Design & Consultancy Services

## IKEA Stores - Yas Island

March 2009  
Yas Island, Abu Dhabi, U.A.E

### Client

IKEA - one of Al Futtaim group compa

### Main Developer

Al Dar Properties

### Construction Cost

220,000,000,00 AED

### Main Consultant

Brewer Smith Brewer Gulf



## Scope of Work

Full Design & Supervision Consultancy Services

## Masjid - Abu Dhabi

February 2010  
Abu Dhabi, U.A.E

### Project Contents

Capacity of 700 prayers for men and ladies, and the praying space connected to Imam and Moazen residence

### Number Of Floor

All project are ground floor building

### Construction Cost

6,284,000.00 AED

### Funded by

General Authority Of Islamic Affairs & Endowments

Urban Design & Planning  
Housing Complexes & Highrise Towers

Hotel Resorts

Sports

Educational

Hospitals

Services Complex & Mall

Government

Office Buildings

Industrial & Stores

Religious

Residences Villas & Palaces

Interior

Religious

- Special Projects -
- Value Engineering -
- Creative Solutions -

## **Fathima Hamel - Mosque**

May 2014  
Abu Dhabi, U.A.E

### **Project Contents**

Capacity of 750 prayers for men and ladies, and the praying space connected to Imam and Moazen residence

### **Number Of Floor**

All project are ground floor building

### **Construction Cost**

5,000,000.00 AED

### **Funded by**

Sheikha Fathima Hamel

## Scope of Work

Full Design & Supervision Consultancy Services

Religious



Urban Design & Planning  
Housing Complexes & Highrise Towers  
Hotel Resorts  
Sports  
Educational  
Hospitals  
Services Complex & Mall  
Government  
Office Buildings  
Industrial & Stores  
Religious  
Residences Villas & Palaces  
Interior  
- Special Projects -  
- Value Engineering -  
- Creative Solutions -



## Private Palace

➤ **Abu Dhabi, U.A.E**

2011  
Abu Dhabi U.A.E





# Private Villas

2008-2015





# Private Villas

2008-2015



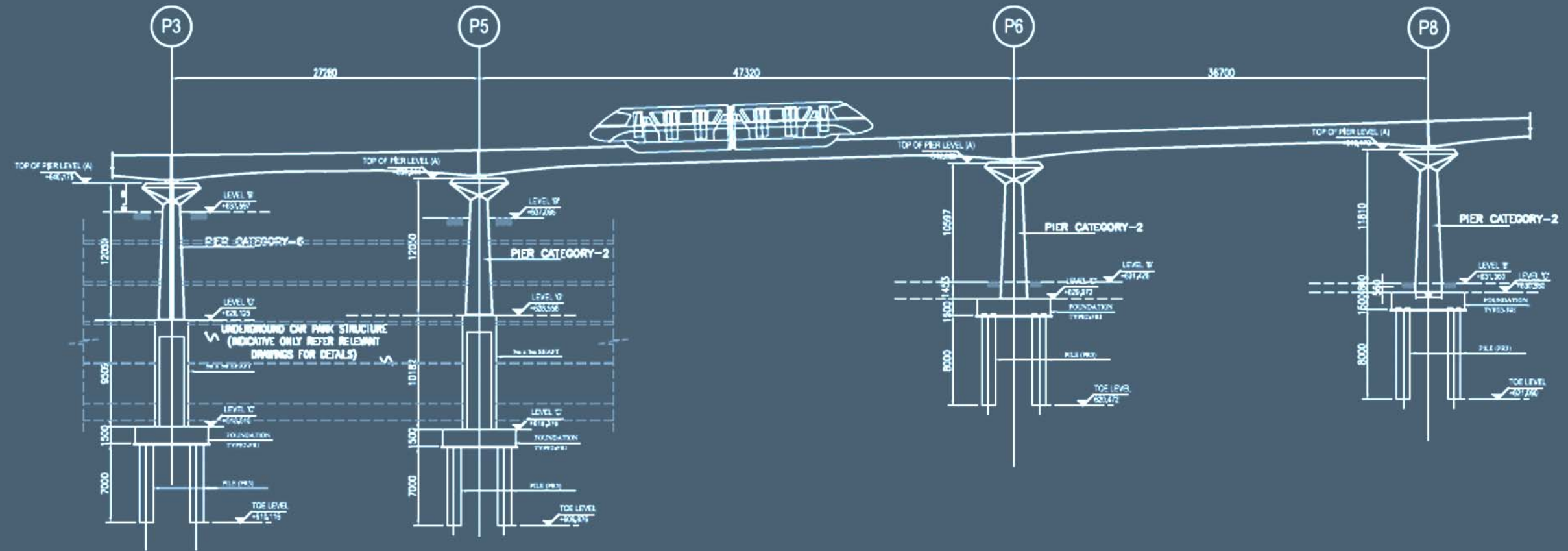
# Private Villas

2008-2015



Urban Design & Planning  
Housing Complexes & Highrise Towers  
Hotel Resorts  
Sports  
Educational  
Hospitals  
Services Comlex & Mall  
Government  
Office Buildings  
Industrial & Stores  
Religious  
Residences Villas & Palaces  
Interior

- Special Projects -
- Value Engineering -
- Creative Solutions -



## Adventure Land

### ➤ Morocco Mall, Casa

April 2014  
Casablanca, Morocco

#### **Client:**

Al Itharah Amusement Center L.L.C.

#### **Description:**

Amusement Park located in Casablanca Morocco, designed by AE Prime for all rides and themes supports and also stability study of some elements according to dynamic loads of the rides.

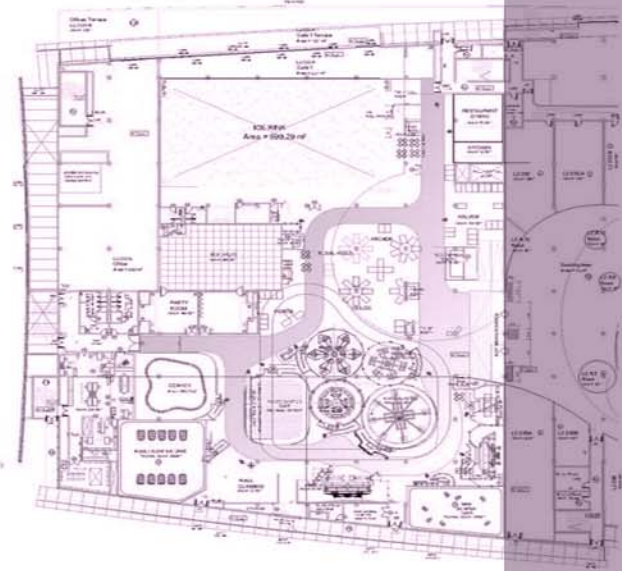
#### **Location:**

Casablanca, Morocco

Full Structural Design of Amusement Park

#### **Main Consultant:**

Edifice - Glencorp



## Adventure Land

One of the lead indoor  
themed parks in the UAE

### ➤ Sahara Centre Sharja, U.A.E

May 2013  
Sharja, United Arab Emirates

#### **Client:**

Al Itharah Amusement Center L.L.C.

#### **Description:**

Amusement Park located in Sharja, designed Railing Sytem by AE Prime for all rides and supports and also stability study of some elements according to dynamic loads of the rides.

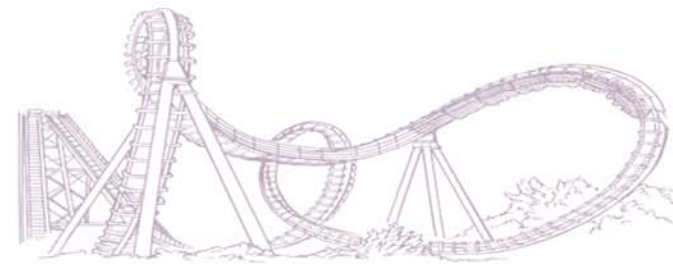
#### **Location:**

Sharja, Unites Arab Emirates

Structural Design of Railing System  
for Amusement Park

#### **Main Consultant:**

Edifice - Glencorp





## Musaffah Port , Two Jettys

2012  
Abu Dhabi, United Arab Emirates

Client  
Ali and Sons Marine Engineering Company

Main Consultant: Al Salam

Project Description  
Full Structure Design of two jettys with the width of 50 and 150 meters

Structure System  
Raft on Piles with secant pile retaining system



## King Abdullah Financial District Monorail System, Riyadh, K.S.A

2011  
Riyadh, K.S.A

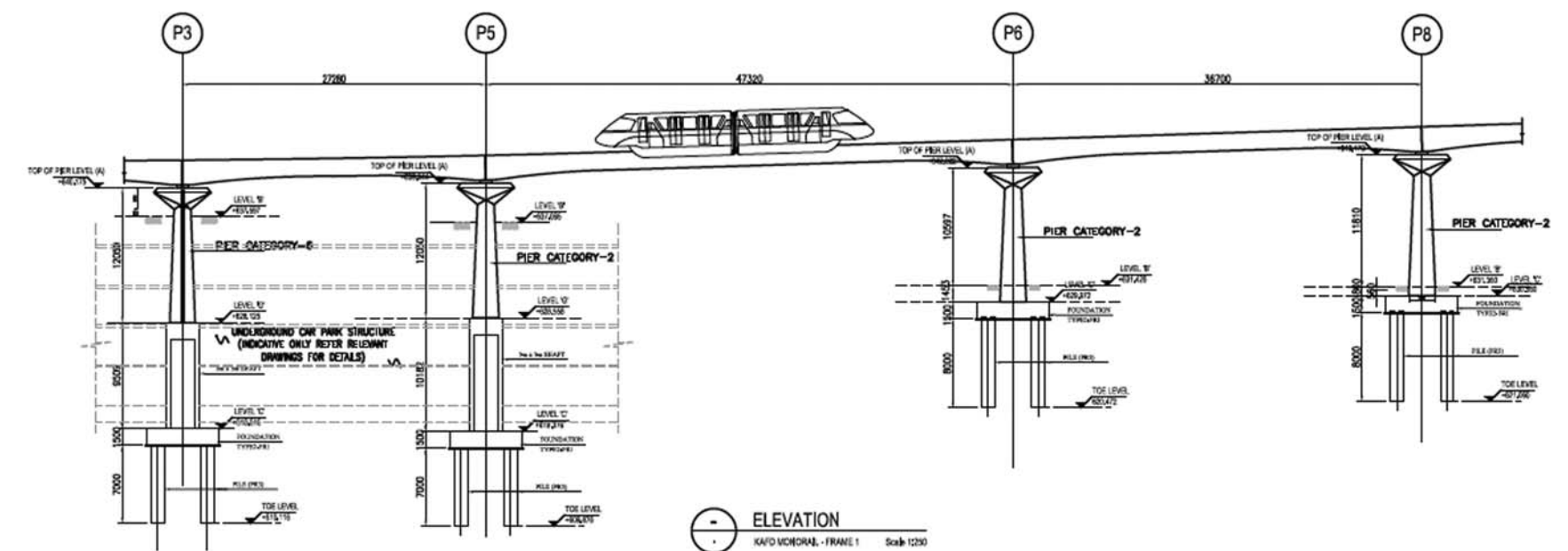
Client  
Rayadah Investment Company

Description  
The project consist of constructing a viaduct for the monorail system at King Abdullah Financial District (KAJD) in Riyadh, K.S.A. The viaduct will be elevated above the ground and supported on piers. AE Prime made a study for the Contractor regarding piers and foundations of the monorail.

Location  
Riyadh , K.S.A

Full Structural Study

Contractor  
Saudi Oger LTD



Urban Design & Planning  
Housing Complexes & Highrise Towers  
Hotel Resorts  
Sports  
Educational  
Hospitals  
Services Complex & Mall  
Government  
Office Buildings  
Industrial & Stores  
Religious  
Residences Villas & Palaces  
Interior  
- Special Projects -  
- **Value Engineering** -  
- Creative Solutions -



## Value Engineering

is systematic method to improve the "value" of services by using an examination of function. Value, as defined, is the ratio of function to cost. Value can therefore be increased by either improving the function or reducing the cost. It is a primary tenet of value engineering that basic functions be preserved and not be reduced as a consequence of pursuing value improvements.

## City of Lights Towers (C2, C3, C10, C10a, C11)

➤ **Abu Dhabi, U.A.E**  
2009  
Abu Dhabi U.A.E

Client: Tamouh Investments

Location:  
Abu Dhabi

Main Consultant: P&T Architects & Engineers Ltd

Construction Cost :  
1,600,000,000.00 AED

Project Description:

**C2,C3 Tower**  
This Project a Residential Tower consist of two basement, lower ground, ground, five podium, thirty floors and roof. Total no. of floors is 40 floors.

**C10, C11 Tower**  
This Project a Residential Tower consist of three basement, ground, seven podium, thirty floors and roof.

**C10a Tower**  
This Project a Office Tower consist of three basement, ground, seven podium, thirty eight floors and roof.



## Seba Tower

➤ **Abu Dhabi, U.A.E**  
2009  
Abu Dhabi, U.A.E

Client:  
H.H Sheikha Mariam Bint

Location  
Abu Dhabi

Project Description :

- This Project is Commercial Tower consist of three basement, ground, mezzanine, twenty one floors and roof.

-The structure system is dual system to resist the lateral loads of Earthquake & Wind and the floor system is flat slab.

Main Consultant : DEC

Spetial Projects



## Crystal Towers

### Dubai, U.A.E

2014  
Dubai, U.A.E

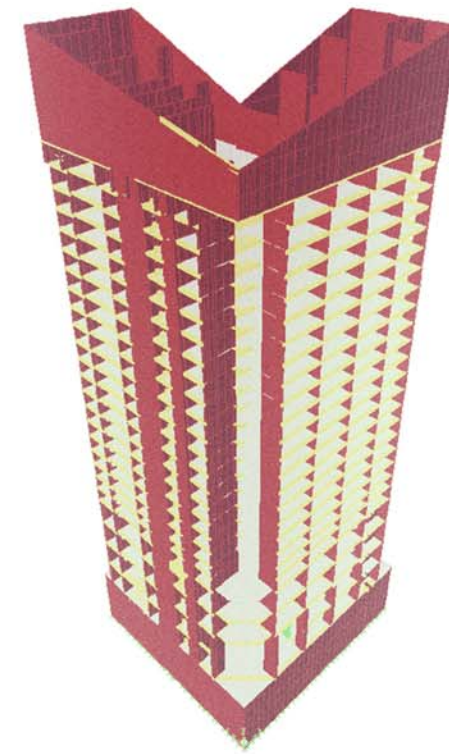
Client: Al Fattan

Location: Dubai

Main Consultant: TABANLIOGLU  
ARCHITECTS

Project Description:

Value Engineering for Two Towers of 30 and 35 stories with high-end mixed-use developments consisting of retail areas, a hotel, luxury apartments and penthouses.



## Eva Hotel

### Abu Dhabi, U.A.E

2009  
Abu Dhabi, U.A.E

Client: United Group Holdings

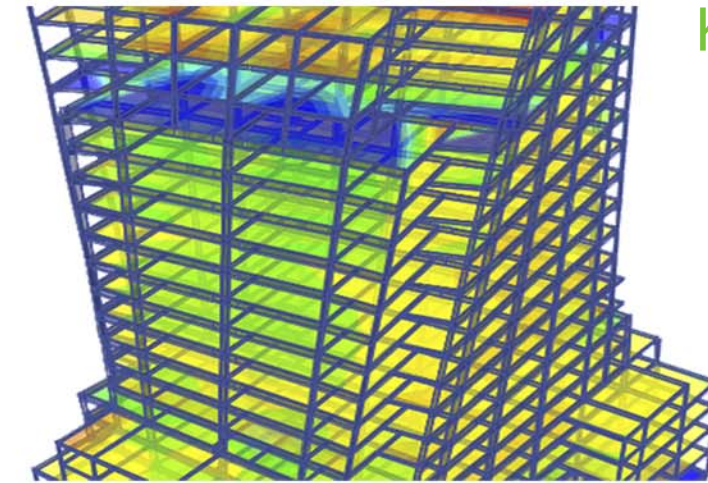
Location: Abu Dhabi

Main Consultant: DEG

Project Description:

This Project is Hotel Suite Tower consist of three basement, ground, mezzanine, twenty eight floors and roof.

The structure system is dual system to resist the lateral loads of Earthquake & Wind and to enhance the horizontal irregularity of the tower



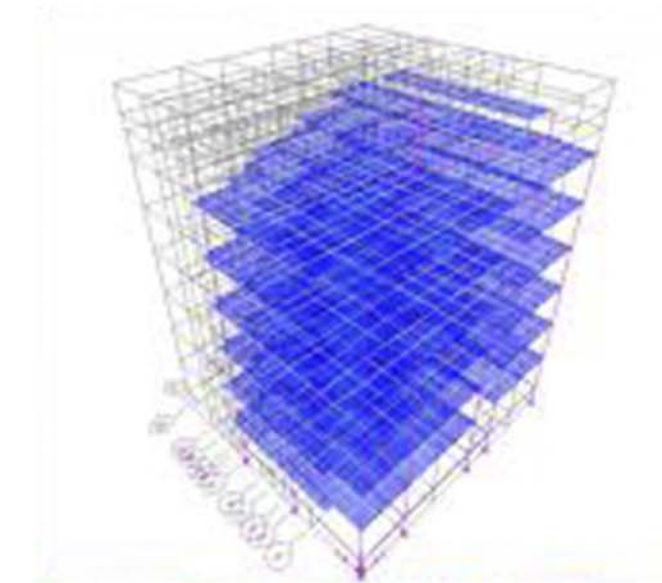
## Kensington Royale

### Dubai, U.A.E

2014  
Dubai, U.A.E

Location: Dubai

Project Description:  
Value engineering for Residential tower with more than 20% savings



## Red Residence

### Dubai, U.A.E

2009  
Dubai, U.A.E

Location: Dubai

Project Description:  
Value engineering for Residential tower with more than 20% savings

# Projects List

## Commercial

Hydra Avenue Towers Hydra Properties	Rakeen Landmark Rakeen	Abu Hail Abdul Jalil yousf	Ikea - Yas Island ALDAR	Commercial Villas Adel Al Hosani
ART Building Adel Al Hosani	ENEC-Emergency Response Centre Dhabi Contract Co.	Main Gate Comlex Stanley cons.	Tamouh / Pal / Tafseer STP (Sewage Treetment Plan)	Private Villa (Palace) Ali Hamil
Commercial Buildings Adel Al Hosani	Industrial Complex Arabtech Jardneh	Commercial & Residential Build- ing Um Obid	Eastern Mangrof TDIC	Private Villas Adel Al Hosani
Beach Residences Towers Al Odaid Real Estate	Al fahid Island Development JLA international	Ruwais Housing Complex Expan- sion - Villa Dhabi Contract Co.	ITCC Al Bawani	Private Villa Khalid Khamis
Sea Tower Al Odaid Real Estate	Sale Centre JLA international	Radiosurgery and Rehabilitation Surgical Institute Pan Arab Surgi- cal Training Centre Meinhardt Group	DSCA Al Bawani	Private Villa Amera Ahmed Yaslem
Rawdhat Abu Dhabi Building Injaz Mena Investment	Command military works - Etis- alat Tower Al Salam Con.		ESC Commercial Center Al Bawani	Eissa Al Qubaisi Building Eissa Al Qubaisi
Makaseb Buildings Makaseb	Commercial & hotel Apart. Damac Prop.	Warehouse Stanley Consultant	Meylas Lounge Kitchen RAPM	Private Villa Haifa Al Shibani
Tamouh Towers Tamouh	Swihan Sahara	Commercial Tower DEC	Al Reem Mall Al Farwaniya	Awqaf building Ali Hamil
Rakeen Tower Hydra Properties	Al Trif Building Sahara	Burj Rafal Tower El Sheika/Hanady Naser Kaled Ahmed Al Thani	Al Shafi Residential Buildings Al Shafi Group	Private Villa Ali Yaslem
Bricco Café - Al Wahda Mall Gonzalo	Showroom Abdul Jalil yousf	Zakher Tower Adel Al Hosani	AMB Office AMB MEAD	Private Villa Essa Al Qubaisi / Malikah
IGG Fitout H20	Meylas Lounge RAPM	Hunting Showroom H20	Marina Hotel Development - Marsa, Dubai 8 Buto Group	Private Villa Anwar Khamis
Tower Dental Clinic Six Sigma			Site Office (Masdar) AMB	Private Villa Hamad/Qatar

## Residential

Private Villa at Liwa Essa Al Qubaisi	Private Villa Yousef Al Ali	Private Villa Ahmed Bin Sumaidaa
Private Villa Mohamed Al Naqeeb	Private Villa Suaaod El Harthy	6 Villas Eissa Al Qubaisi
Private Villa Ahmed Al Moreikhy	Private Villa Khalid Bin Sumaida	Private Villa Mr. Saleh Bin Sumaidaa
Private Villa Al Faheem	Private Villa Naser Al Harthy	Private Villa Hoda Baker AL Hosani
Private Villas Ahmed Al Mehry	Private Villa Abdul Salam Al Ali	Private Villa Mr. Nabil Al Hareh
Private Villas Youssef El Mehry	Private Villa Bilarab Al Yaroubi	Private Villas Khalifa Al Hamadi
Private Villas Salem Al Shekily	Private Villa Mona Al Zaabi	Private Villa Capten Alia
Private Villas Ali Ghareeb	5 Villas Adel Al Hosani	Private Villa Eissa Al Qubaisi
Private Villa Mhd. Naser Al Dayan	Private Villa Abdulla Sayed Villa	Private Villa Mohammad Al Hammily
Private Villa Ahmed Gaafar	Compound Zayed City Adel Al Hosani	Private Villa Bukhatir
Private Villa Amnah Bakodah	7th Building Adel Hosani	Private Villa Mohamad Al Junaiby
Private Villa Mohammed Al Biloushy	Private Villa Eng Segam	Private Villa Mohamed Al Aidaros

Residential

<b>Private Villa</b> <b>Mr. Mohammed Yousef Al Qaedi</b>	Private Villa Mr. Ali Ahmed Al Hadrami	AL Harbour Heights Tower Shankland Cox
<b>Private Villa</b> <b>Hussein Fadhl</b>	Private Villa Mr. Ali Hamel Al Ghaith	Private Villa Mohaddad Nouaimi
<b>Private Villa</b> <b>Rashad Al Shaibani</b>	Private Villa Mr. Tawfic Alshaibani	Private Villa Saleha Abdullah
<b>Private Villa</b> <b>Saleh Al Wahdy</b>	Private Villa Mr. Hamad Al Darei/ Mr. Al Nouami	Private Villa Iman Makkawi
<b>Private 6 Villas</b> <b>Al Shafi Group</b>	Private Villa Um Ibrahim Al Tamimi	Al Shafi Residential Buildings Al Shafi Group
<b>Private Villa</b> <b>Salmeen Hassan</b>	Private Villa Mohamed Hassan Al Hamady	Royal Villas MZ Architects
<b>Private Villa</b> <b>Latif Al Shibani</b>	Crystal Tower ANC	Royal Group Tower Royal Group
<b>Private Villa</b> <b>Ateeq Khamis Butti Al Muwaijei</b>	Al Hayer Resident Development Dorsh	Residential Building Mr. Hamdan Matar Butti Al Khaili
<b>Private Villa</b> <b>Sakher Al Messabi</b>	Residential Tower in Al Reem Avantgarde Architects Engineers	3 Private Villas Mr. Khalifa - Al Sahraa Group
<b>2 stories Buildings</b> <b>Al Shafco</b>	Marina Tower Continental Investment LLC	Yas Island - Zone K 1017 Villas JLA International
<b>Private Villa</b> <b>Ahmed Al Mansouri</b>	Eye trust Tower DEC	Private Villa Mr. Nahyan Alameri
<b>Private Villa</b> <b>Ahmed Abdullah Obaid Al Amery</b>	Seba Tower DEC	Private Villa Mr. Ismail Al Basher

Religious

Mosque Ali Hamil
Mosque Fahad Sheakh
Mosque Mona Al Zaabi
Mosque Al Said Abdulla Hashimy
Mosque ALI HAMEL ALGHITH
Mosque Al Shafi Group

Offices

Babcock Office Building Babcock
KPIZ-ADPC site office ADPC/AMB

Hospitals

Hospital Offices Ali Hamil
Sea Palace Accommodation Clinic Royal Architects
Al Salam Hospital HDP Overseas Ltd
Musafah DPSC Astorino & Associates
Al Manhal Clinic, Abu Dhabi Astorino & Associates
NRC (Str. Design for Sewerage System) HDP Overseas Ltd
Academic Medical Centre China State

Hotels

Hotel Complex Resort (Antiqua Island ) Dr. Ali al dakrory
Eva Hotel DEC
Bin Samikh tower ACE

Educational

Virgina International School Ghantoot Gulf Contracting
Yas Island School AL Dar
Yas Island - Zone K School Unimarine

Industrial

ReadyMix Factory Rubayea Al Menhali
Al Wathba Deporation Complex Aswar
Industrial Workshop Ali Hamel
Mubadala Warehouse Mubadala
New Factory ICAD 3 Unimarine
Supervision for Violators and For- eigners Section in Al Wathba, Abu Dhabi. Musanada

Public Buildings

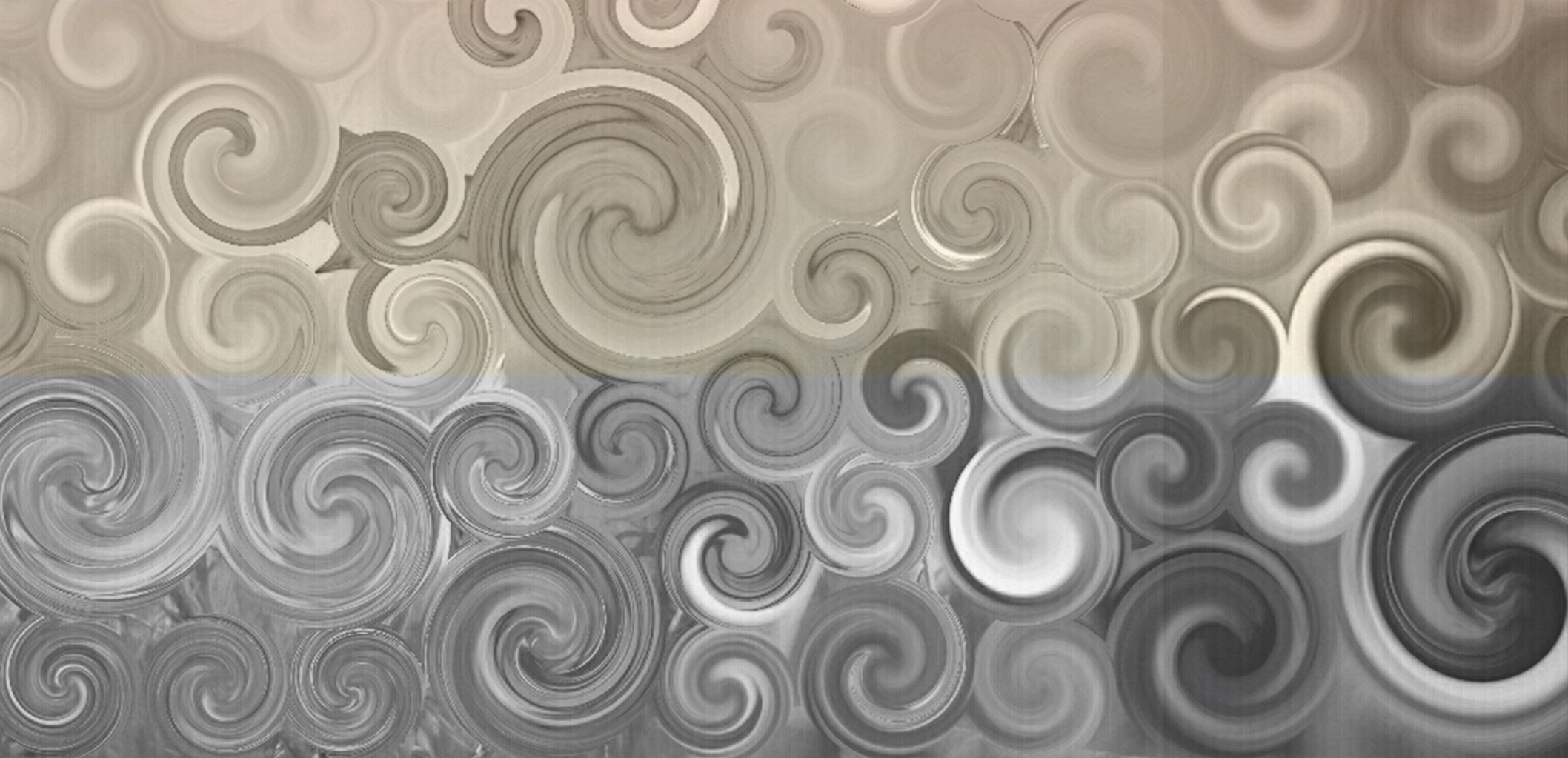
Turkish Embassy Turkish Government
Doosan Heavy Equipment & Con- struction ADPC
"Inttution Of Nationality& Residency" P.P.C.
Al Ain Service Building TARGET CONSULTANT
Design of 5 Centres for the Protec- tion of Wild Environment Sector Musanada
Design of Civil Defence Building at Al Falah Musanada
Meena Plaza Development, Abu Dhabi RAPM
Design of Civil Defense Building in Al Samaliah Island, Abu Dhabi Musanada

Sports

KSU Stadium KSU
--------------------

Spetial Projects

Morocco mall (Adventure land) Bhukatir
Sahara Centre (Adventure Lnad) Bhukatir
Ship Yard Ali Hamil



## Branches

Prime Head Office, Abu Dhabi, UAE  
Tel No: + 971 26799899  
Fax No: + 971 26799890  
Email : prime@primeec.com

AE Prime Engineering Consultants, Dubai, U.A.E  
Tel No : +971 4 4310661  
Fax No: +971 4 4310663  
Email : aeprime@primeec.com

Prime Engineering Consultants, Cairo  
Tel No: +2 26714966 — 0110056300  
Mobile: + 2 0110056302 — 0110604654  
Email : prime@primecairo.com

Prime Engineering Consultants, Riyadh, Jeddah, KSA  
Tel No : +966 014612454 — +966 014650101  
Fax No: +966 014627676  
Mobile: +966 592303333

[www.primeec.com](http://www.primeec.com)

